

Refresh Your
Day with
**Tropical
SuperFruits**



cap
ORGANIC SL™



CAP ORGANIC

it's always unique

The jungles miracle gift to the world..!

PROUDLY MADE IN SRI LANKA



Connect with nature



CAP Green Forest (Pvt) Ltd

Cultivation

Est. 2017 | PV 120886



CAP Organic (Pvt) Ltd

Value Addition and Trading

Est. 2019 | PV 00218923



CAP Engineering

Design & Consultation

Est. 2013 | K11201



The Agro Forest

Agro-Tourism

Est. 2018 | K15119



CAP Vinery (Pvt) Ltd

Manufacturing of Alcoholic Beverages

Est. 2022 | PV 00269745



CAP Fruity (Pvt) Ltd

Fresh Fruits & Vegetables Provider

Est. 2022 | PV 00261233



CAP Ceylon F & B FZC

Natural | Organic Food & Beverage Provider

Est. 2022

About us

CAP is a green agriculture technology and a farming company involved in agricultural crop production. CAP has initiated a project in Sri Lanka with the main purpose of establishing and developing the agro-business in the country. CAP has embarked on a business rollout plan which comprises of:



- The upgrade and expansion of CAP's vertically integrated operations.
- The expansion and modernization of the Company's primary agricultural operations.
- Support the growth of the Company's operations.

Vision

Augmenting value addition to crops to develop a sustainable organic agro based industry.

Mission

To grow the Agro business in Sri Lanka, by guiding and training farmers to use the latest technology and develop organic farming of the highest quality, Develop infrastructure, Improve lifestyles and social standing of farmers by providing a real value for their produce. The quality produce from the farms to be developed into value added products that generate increased forex and local revenues.

Values

Integrity | Respect | Diversity | Sustainability | Gender Equality

With sustainable farming

100% Organic

Increase the availability of organic fruit and vegetable supply.

Super healthy

Pesticide and chemical-free healthy production of crops.

Improving lives

Providing planting seeds and microfinance services for farmers.

Moral and conscience

We care about environmental and social welfare and culture.

NAME OF THE COMPANY:

CAP Organic (Pvt) Limited

LEGAL STATUS :

Private Limited Liability Company

NAME OF THE DIRECTOR:

Ranjan T. Hanchapola

BUSINESS ADDRESS :

No 37/E/3, Ambasewana Road,
Kalagedihena, Sri Lanka

FACTORY ADDRESS :

19th Mile Post, Udawalawa Road,
Thanamalvila Sri Lanka

PLANTATION ADDRESS:

19th Mile Post, Udawalawa Road,
Thanamalvila Sri Lanka

TELEPHONE NUMBER :

+94 777 557 558, +94 7 26 36 46 56

BUSINESS EMAIL ADDRESS:

info@caporganic.com

WEB PAGE :

www.caporganic.com

NO OF EMPLOYEES :


50

SOCIAL MEDIA LINK :

CAP Organic SI
CAP Ceylon
CAP Green Forest
Women Farmers Association (WFA)

MAIN BUSINESS SOURCES :

Value Additions to Agro Business and
Exporting



The Founder Managing Director of the CAP Group, Ranjan is an enthusiastic young entrepreneur, born to an agricultural family from the eastern province of Sri Lanka.

Having graduated as a Bachelor in Arts in Economic and International Studies, Ranjan started a career in the field of construction leading him to pursue studies in the field of Construction Management and Quantity Surveying

A Quantity Surveyor by profession then, he worked in the commercial sector, before becoming the Project Coordinator of the United Nations Office for Project Service (UNOPS) team. Here he was engaged as a consultant for a plantation project operated by a group of Norwegians. Working with this group inspired him to believe that opportunities existed for farming which led him to start his own plantation, thus leading to his long-term dream & passion of becoming an Agro Entrepreneur to uplift the rural farming community of Sri Lanka.

Ranjan engaged in the business of cultivat-

ing and exporting of Super-fruits, Special Spices and Vegetables by motivating farmers to join him on the journey through special training programmes where wide knowledge was disseminated in the modern dynamics of the trade and supporting them to embark on these ventures by arranging finance and offering those joining him guaranteed prices for their produce .

Being in cultivation, Ranjan, began to understand the plight and challenges of farmers in disposing of highly perishable fruits in short time frames, which drove him to probe methods that could preserve the crops. This led him to identify the opportunity for developing value added products which is today in big demand.

His Innovative, dynamic and charismatic character has helped him within a short span of time to develop healthy relationships with farmers, local authorities and international buyers and move towards establishing a global brand with an exclusive range of products.

Ranjan T. Hanchapola

Chairman | CAP Group
Founder | Managing Director - CAP Organic (Pvt) Limited
Founder | Managing Director - CAP Green Forest (Pvt) Limited
Founder | Sole Proprietor - CAP Engineering
Founder | Director | CEO - CAP Vinery
Co-Founder | Partner of The Agro Forest
Director | CEO - CAP Fruity
Director | CEO - CAP Ceylon F & B FZC



Ranjan T. Hanchapola

Chairman | CAP Group
Founder | Managing Director - CAP Organic (Pvt) Limited
Founder | Managing Director - CAP Green Forest (Pvt) Limited
Founder | Sole Proprietor - CAP Engineering
Founder | Director | CEO - CAP Vinery
Co-Founder | Partner of The Agro Forest
Director | CEO - CAP Fruity
Director | CEO - CAP Ceylon F & B FZC

+94 777 557 551 | ranjan@cap.lk

Board of Directors - CAP Green

Dirk A. Veugelers

Director & Coordinator International
CAP Green Forest (Pvt) Ltd

dirk@capgreen.life
dirk@georgesdrive.nl

Arno Veugelers

Chairman
**CAP Green Forest (Pvt) Ltd &
DIFASA Green Farming Co Ltd. - Sri Lanka**

Executive Director
CAP Farmers Foundation - Netherland

ave@difasagreen.com

Consultant team

Radley Stephen

**Senior Advisor to Chairman &
Director Sales**

radley@caporganic.lk

Dr. Yvonne Fernando

**Consultant - Products
Development Food & Beverage**

yvonnelfernando@gmail.com

Dr. Dharmadasa

**Consultant -
Research & Development**

dharmadasa@iti.lk

Nilushana Sooriyaarchchi

**Consultant -
Agri-Business Development**

nilushana@nadep.lk

Pradeep Rajapaksha

**Consultant- Product Development
& Production Line Expanding**

wpradeeprajapaksha@gmail.com

Dr. Sanjeewa K. Rodrigo

**Consultant -
Research & Development**

sanjeewarodrigo@gmail.com



CAP  **UBAI**
CONNECT WITH NATURE

CAP CEYLON F & B FZC
C/O SRI LANKA TRADE OFFICE,
RADISSON BLU HOTEL DEIRA CREEK,
BANIYAS ROAD, DEIRA
DUBAI, UAE





Board of Directors **CAP CEYLON F & B FZC**

Ranjan T. Hanchapola

Director
CAP Ceylon F & B FZC
ranjan@cap.lk

Imesh Abeywickrama

Director International Business
CAP Ceylon F & B FZC
imesh@capceylondubai.com

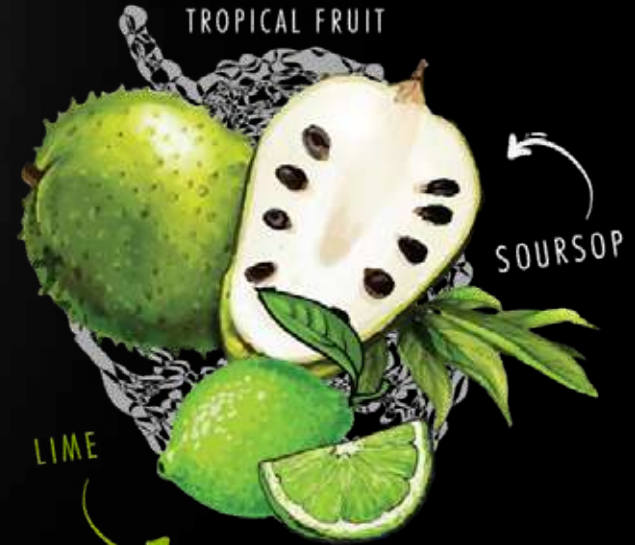
Glass bottle with safety metal lid

No sugar



GRAVIOLA™ CLEANSE

REFRESH YOUR DAY WITH THE TROPICAL FRUIT



"Everything tastes good, when it helps you feel Slim"



100% Natural Graviola Pulp & Lime

250mL e 8.5 fl.oz

+ No Preservatives

250ml Glass Bottle with Safety Metal Lid, 100% Natural Graviola Pulp, Natural Lime juice, No Added Preservatives, Sugar-Free (used Stevia - 0g/100ml) with 12-month Shelf life.

12 months Pasteurization & Shelf life



GRAVIOLA™ CLEANSE

FRESH YOUR DAY WITH THE TROPICAL FRUIT



"SEPERATION IS NATURAL"

SHAKE WELL & ENJOY CHILLED

"NOTHING TASTES AS GOOD AS BEING SLIM FEELS"

SUGAR	SALT	FAT
0g	0g	0g

250ml 8.5 fl.oz. PRODUCT OF SRI LANKA



"SEPERATION IS NATURAL"



**100%
Natural
Graviola Pulp**

GRAVIOLA™ COMFORT™

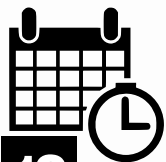
REFRESH YOUR DAY WITH THE
TROPICAL FRUIT



Low sugar

SOURSOP

**+ No
Preservatives**



12 month

Pasteurization
and Shelf life

"SEPERATION IS NATURAL"



**Glass
bottle
with
safety
metal lid**

**250mL e
8.5 fl.oz**



Health and
Comfort,
Glass Bottled

250ml Glass Bottle with Safety
Metal Lid, 100% Natural Graviola
Pulp, No Added Preservatives,
Low Sugar with pasteurizing
and Shelf Life -12 months



GRAVIOLA™ EDGE

REFRESH YOUR DAY WITH THE
TROPICAL FRUIT



LEMON

SOURSOP



"SEPERATION IS NATURAL"

**Glass
bottle
with
safety
metal lid**

**Medium
sugar**

**+ No
Preservatives**

**250mL e
8.5 fl.oz**



12 month
Pasteurization
and Shelf life

**100%
Natural
Graviola Pulp &
Lemon Flavor**

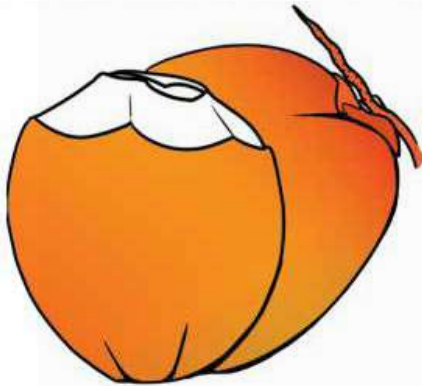
250ml Glass Bottle with Safety Metal Lid, 100% Natural Graviola Pulp, Lemon Juice, No Added Preservatives, Medium Sugar with pasteurizing and Shelf Life -12 months.

"Heart is not the only organ that symbolizes love, so does your **KIDNEYS**"



COOL KING

BOTTLED KING COCONUT WATER



FROM THE TROPICA ISLAND OF
SRI LANKA

100% Natural
King Coconut water

+ No Preservatives

No sugar

12 month
Pasteurization and Shelf life

250ml Glass Bottle with Safety Metal Lid, 100% King Coconut Water, No Added Preservatives, No Added Sugar with pasteurization and Shelf Life -12 months.



Glass bottle with safety metal lid

“Healthy drinking for a life that looks good and strong”



250mL e
8.5 fl.oz

Glass bottle with safety metal lid

12 months
Pasteurization & Shelf life

100% Natural Jackfruit pulp

+ No Preservatives

**250mL e
8.5 fl.oz**

250ml Glass Bottle with Safety Metal Lid, 100% Natural Jackfruit Pulp, No Added Preservatives, Medium Sugar with pasteurizing and Shelf Life -12 months.

Some people are like jackfruit hard and rude outside. **Soft and sweet** in inside difficult to open the outer layer to find the sweet quality of core

Medium sugar



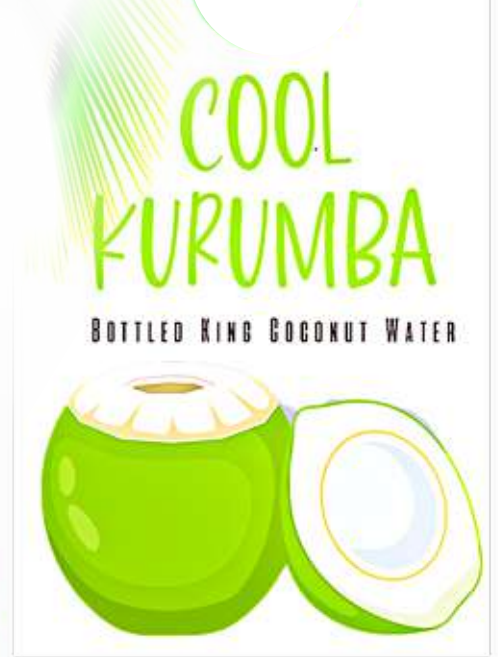
COOL JACK™



250mL e
8.5 fl.oz

Glass
bottle
with
safety
metal lid

"I'm just
taking care
of myself:
Eating less,
exercising
more,
drinking
a lot of
coconut
water."



No sugar

100%
Natural
Kurumba
water

+ No
Preservatives

12 months
Pasteurization &
Shelf life

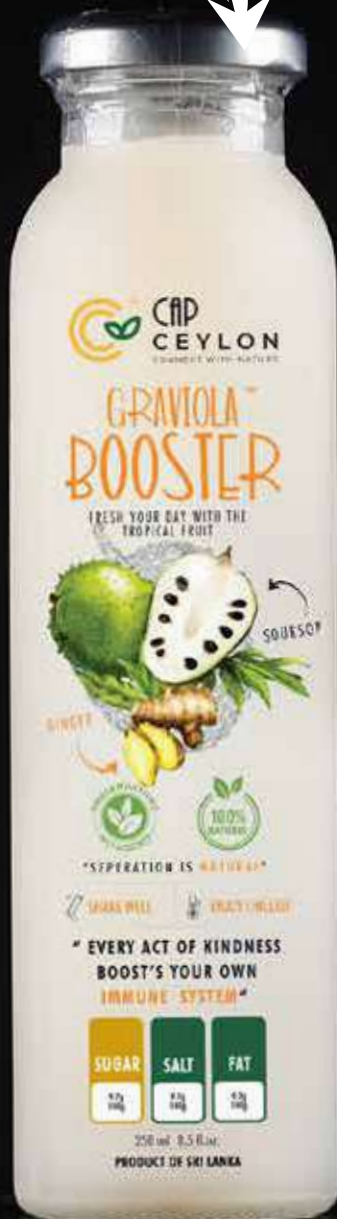
"250ml Glass Bottle with
Safety Metal Lid, 100% Coconut
Water, No Added Preservatives, No
Added Sugar with pasteurizing and
Shelf Life -12 months.

Glass bottle with safety metal lid

Medium sugar

+ No Preservatives

250mL e 8.5 fl.oz



“ Every act of kindness boost's your own Immune System”

12 month
Pasteurization and Shelf life

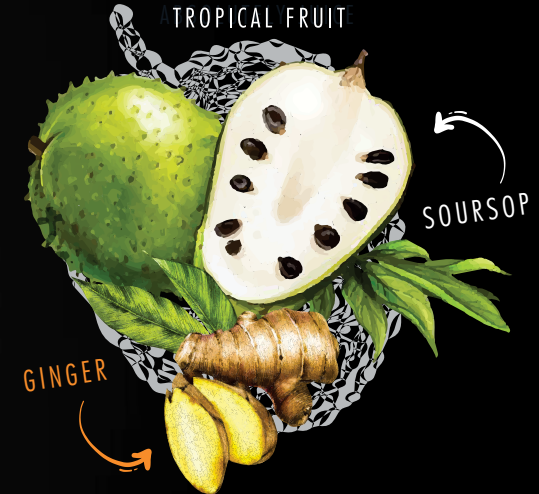
100% Natural
Graviola Pulp & Ginger

250ml Glass Bottle with Safety Metal Lid, 100% Natural Graviola Pulp, Ginger Juice, No Added Preservatives, Medium Sugar with pasteurizing and Shelf Life -12 months.



GRAVIOLA BOOSTER

REFRESH YOUR DAY WITH THE TROPICAL FRUIT



“SEPERATION IS NATURAL”


12 month
Pasteurization
and Shelf life


No sugar



350ml Glass Bottle with Safety
Metal Lid, 100% King Coconut Water
and Kernel, No Preservatives, with
pasteurization and Shelf Life -12
months

100%
Natural
King Coconut
water

350mL e
11.9 fl.oz

**Glass
bottle
with
safety
metal lid**

No+
Preservatives

"A truly
Tropical Healthy
thirst
quencher"



"A Nut To
keep you
healthy"

No+
Preservatives


12 month
Pasteurization
and Shelf life

100%
Natural
King Coconut
water


No sugar



350ml Glass Bottle with Safety Metal Lid, 100% King Coconut Water, No Preservatives, with pasteurization and Shelf Life -12 months

350mL e
11.9 fl.oz





GRAVIOLA™ CLEANSE

REFRESH YOUR DAY WITH THE
TROPICAL FRUIT



SOURSOP

LIME



“NATURAL FRUIT PUNCH”



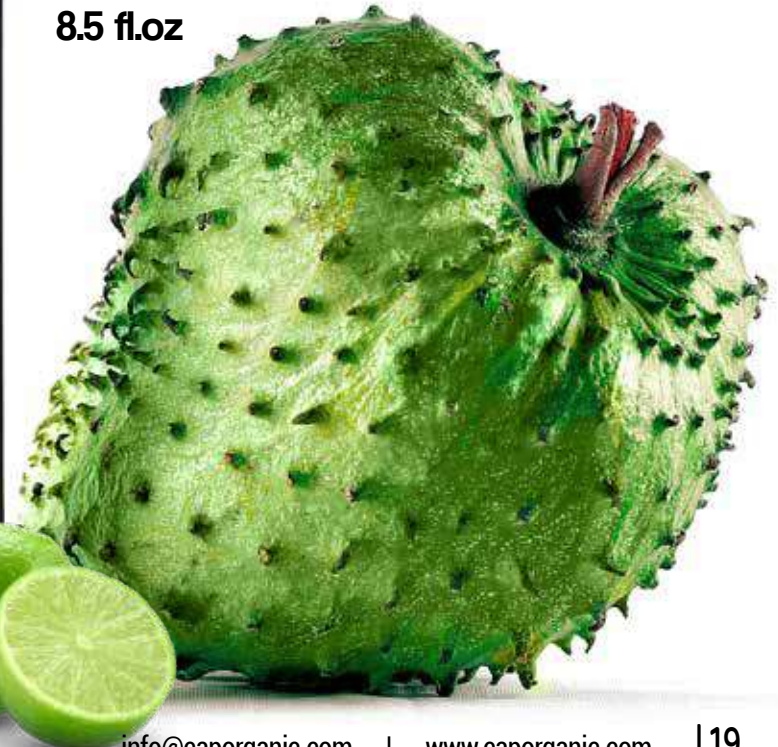
**Aluminum
Cans**

250mL e
8.5 fl.oz

**100%
Natural
Graviola Pulp &
Lime**

Preservatives +

250ml Aluminum Cans,
100% Natural Graviola
Pulp, Natural Lime
juice, Added Permitted
Preservatives, Medium
Sugar (8g/100ml) with
Shelf Life -12 months.



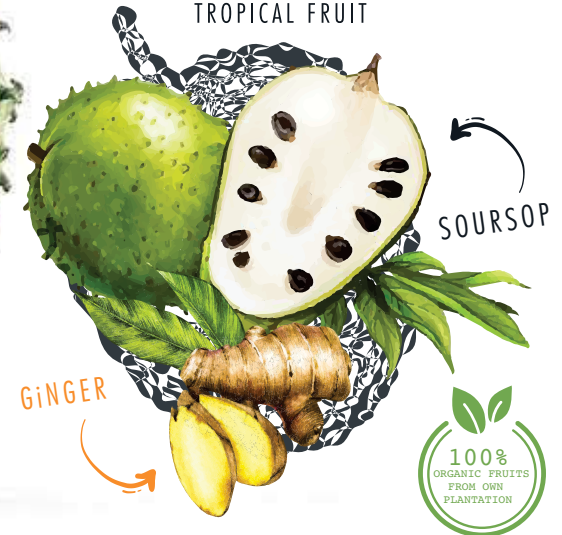
Natural
cures that
**tastes
great**

“Every act of kindness
boost’s your
own
Immune
system”



GRAVIOLA™ BOOSTER

REFRESH YOUR DAY WITH THE
TROPICAL FRUIT



“NATURAL FRUIT PUNCH”

100% Natural
Graviola Pulp &
Ginger

**Aluminum
Cans**

+ Preservatives

**Medium
sugar**

12 month
Shelf Life

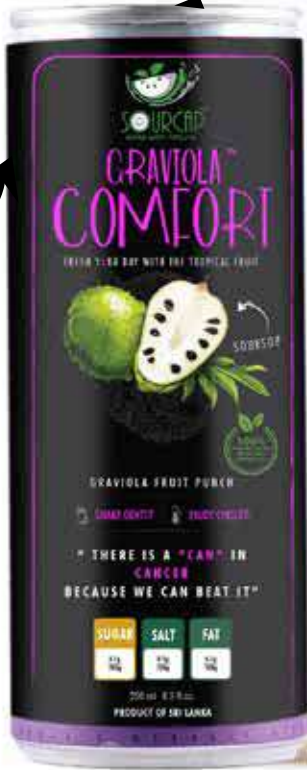


250mL e
8.5 fl.oz

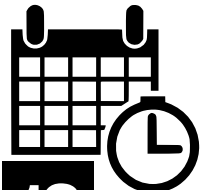
"Happiness creates the highest level of good health"

Preservatives + Aluminum Cans

100% Natural Graviola Pulp



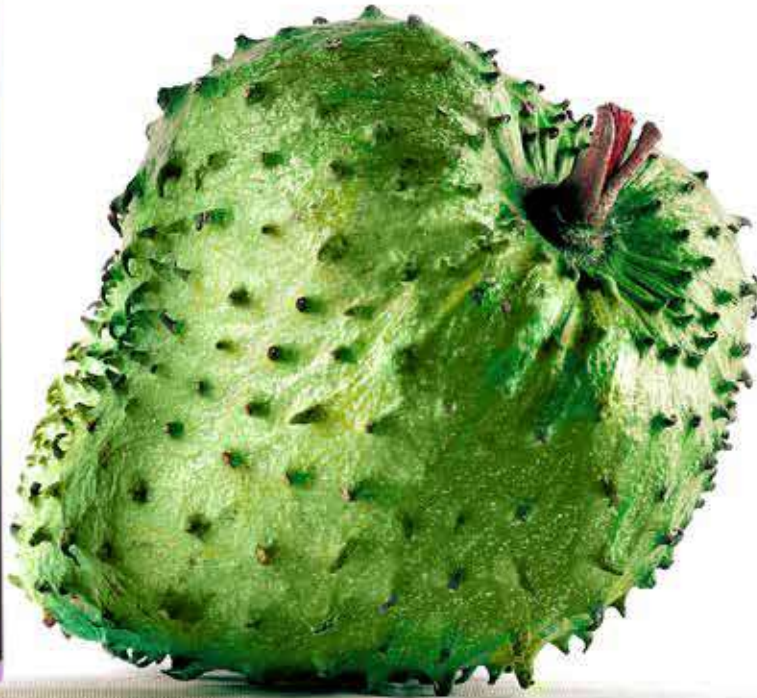
Medium sugar



12 month Shelf life

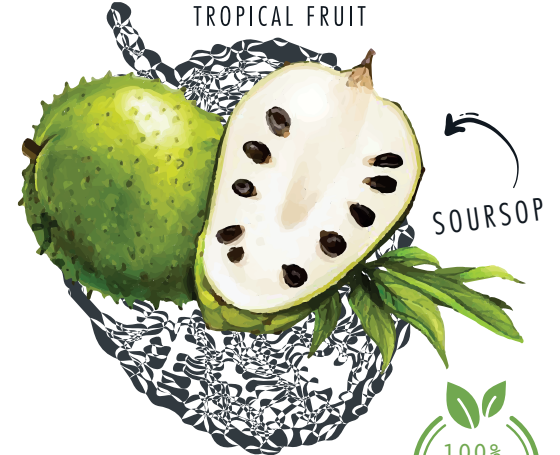
250mL e
8.5 fl.oz

250ml Aluminum Cans, 100% Natural Graviola Pulp, Natural Lime juice, Added Permitted Preservatives, Medium Sugar (8g/100ml) with Shelf Life -12 months.



GRAVIOLA™ COMFORT

REFRESH YOUR DAY WITH THE TROPICAL FRUIT



"NATURAL FRUIT PUNCH"



GRAVIOLA EDGE™

REFRESH YOUR DAY WITH THE TROPICAL FRUIT



"NATURAL FRUIT PUNCH"

250ml Aluminum Cans, 100% Natural Graviola Pulp, Natural Lemon juice, Added Permitted Preservatives, Medium Sugar (8g/100ml) with Shelf Life -12 months.

Preservatives +

Aluminum Cans

100% Natural Graviola Pulp & Lemon



12 month Shelf Life



"Not All Fruits Are Created Equal"



250mL e
8.5 fl.oz

Drink
Smart,
Live Smart


12 month
Pasteurization
and Shelf life

**Aluminum
Cans**

**Permitted
Preservatives**


**Medium
sugar**

**100%
Natural
Graviola Pulp**

**250mL e
8.5 fl.oz**



ANNOLLA™

250ml Aluminum Cans, 100% Natural
Graviola Pulp, Added Permitted
Preservatives, Medium Sugar (9.4g/100ml)
with Shelf Life -12 months.



Little thing
with an
awesome
taste

Glass
bottle
with
safety
metal lid



100%
Natural
Rambutan
pulp

200mL e
6.8 fl.oz


12 month
Pasteurization
and Shelf life


Medium
sugar

No+
Preservatives



RAMBUTANTM

250ml Aluminum Cans, 100% Natural Graviola Pulp, Natural ginger juice, Added Permitted Preservatives, Medium Sugar (8g/100ml) with Shelf Life -12 months.

Energy	Fat	Saturates	Sugar	Salt
95kcal	0g	0g	11g	0g
5%	ZERO	ZERO	MED	ZERO
	0%	0%	26%	0%

Medium sugar

12 month
 Pasteurization and Shelf life

Glass bottle with safety metal lid

The latest, Rich health supplement



WARAKA™

200ml Glass Bottle, 100% Natural Jackfruit Pulp, No Preservatives, Medium Sugar (11g/100ml) with Shelf Life -12 months.

100% Natural
 Jackfruit pulp

200mL e
 6.8 fl.oz

No+
 Preservatives



Energy	Fat	Saturates	Sugar	Salt
113 kcal	1g	0g	11g	0.1g
6%	LOW	ZERO	MED	LOW
	1%	0%	26%	3%

A Healthy Immune System Ensures A Healthy Body



100% Natural Soursop pulp

Glass bottle with safety metal lid



ANNOLLA™

200ml Glass Bottle, 100% Natural Soursop Pulp, No Preservatives, Medium Sugar (10g/100ml) with Shelf Life -12 months.


12 month Pasteurization and Shelf life

Energy	Fat	Saturates	Sugar	Salt
103kcal	0.6g	0g	10g	0.08g
6%	LOW	ZERO	MED	LOW
	1%	0%	26%	3%

Not Preservatives



200mL e 6.8 fl.oz

 **12** month
 Pasteurization
 and Shelf life


**Medium
 sugar**

The daily
 health
 supplement

No+
 Preservatives

200mL e
 6.8 fl.oz

100%
 Natural
 Guava pulp

 **CAP
 CEYLON**
 CONNECT WITH NATURE

PERRATM

200ml Glass Bottle, 100%
 Natural Guava Pulp, No Preservatives,
 Medium Sugar (11g/100ml) with
 Shelf Life -12 months.

Energy	Fat	Saturates	Sugar	Salt
113kcal	1g	0g	11g	0.1g
6%	LOW	ZERO	MED	LOW
	1%	0%	26%	3%

A nature
lovers
treat

Glass
bottle
with
safety
metal lid

No⁺
Preservatives


12 month
Pasteurization
and Shelf life

200mL e
6.8 fl.oz


Medium
sugar

100%
Natural
Alovera pulp



CAP
CEYLON
CONNECT WITH NATURE

ALORATM

200ml Glass Bottle, 100%
Natural Alovera Pulp, No Preservatives,
Medium Sugar (11g/100ml) with
Shelf Life -12 months.

Energy	Fat	Saturates	Sugar	Salt
95 kcal	0g	0g	11g	0g
5%	ZERO	ZERO	MED	ZERO
	0%	0%	26%	0%

No+
Preservatives

Glass
bottle
with
safety
metal lid

100%
Natural
Durian pulp

12 month
Pasteurization
and Shelf life

One man's
dream another
man's dilemma

Medium
sugar

200mL e
6.8 fl.oz



DOORIO™

200ml Glass Bottle,
100% Natural Durian Pulp,
No Preservatives,
Medium Sugar (11g/100ml) with
Shelf Life -12 months.

Energy	Fat	Saturates	Sugar	Salt
128kcal	0.2g	0g	11g	0.08g
6%	LOW	ZERO	MED	LOW
	3%	0%	26%	3%



Glass bottle with safety metal lid

No+ Preservatives



100% Natural Wood Apple pulp



200mL e
6.8 fl.oz



12 month
Pasteurization and Shelf life

Hard and ugly shell conceals a wonder

DTWUL™

200ml Glass Bottle, 100% Natural wood apple Pulp, No Preservatives, Medium Sugar (11g/100ml) with Shelf Life -12 months.

Energy	Fat	Saturates	Sugar	Salt
113kcal	1g LOW	0g ZERO	11g MED	0.1g LOW
6%	1%	0%	26%	3%

Breakfast
without
watermelon
juice is like a
**day without
sunshine**

**100%
Natural**
Watermelon
pulp

**Glass
bottle
with
safety
metal lid**

12 month
Pasteurization
and Shelf life

No+
Preservatives

200mL e
6.8 fl.oz



KOMADUTM

200ml Glass Bottle,
100% Natural Watermelon Pulp,
No Preservatives,
Medium Sugar (11g/100ml) with
Shelf Life -12 months.

**Medium
sugar**

Energy	Fat	Saturates	Sugar	Salt
103 kcal	0g	0g	11g	0g
6%	ZERO	ZERO	MED	ZERO
	0%	0%	26%	0%



Glass bottle with safety metal lid



200mL e
6.8 fl.oz



100% Natural
Passion Fruit pulp

Not
Preservatives

Medium sugar

12 month
Pasteurization and Shelf life

Relive your passion with real life



PASSION™

200ml Glass Bottle,
100% Natural Passion Fruit Pulp,
No Preservatives,
Medium Sugar (11g/100ml) with
Shelf Life -12 months.

Energy	Fat	Saturates	Sugar	Salt
121kcal	0.1g	0g	11g	0.01g
6%	LOW	ZERO	MED	LOW
	0%	0%	26%	1%

Beauty is
always
concealed

**100%
Natural**
Graviola Pulp,
Lime Juice &
Ginger



ANNOLLA™ LITE



REFRESH YOUR DAY WITH THE
TROPICAL FRUIT

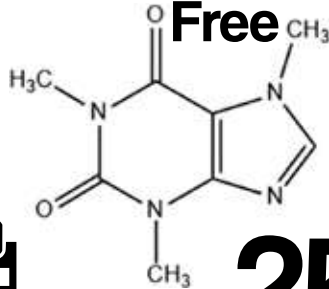

12 month
Pasteurizing
and Shelf life



250ml Glass Bottle with easily openable crown lid, 100% Natural Graviola Pulp, Natural Lime Flavor, Added Permitted Preservatives, Sugar with pasteurization and Shelf Life -12 months



Caffeine Free



24 month
Shelf Life

25 bags
Packed with
Pyramid bags



**CAP
CEYLON**
CONNECT WITH NATURE

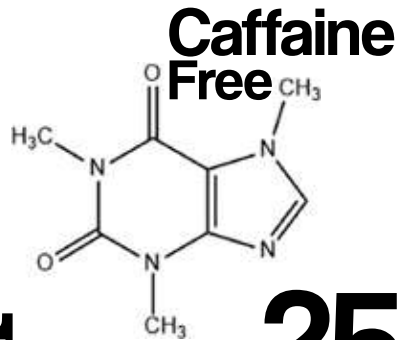
CAP NIGHT *Tea*

**If you are cold,
tea will warm you;
if you are too heated,
it will cool you;
If you are depressed,
it will cheer you;
If you are excited,
it will calm you.**

What is the special with this TEA, Its blend with Graviola (Soursop) Leafs, Walpenala and Ashwaganda with Self Life -12 months. Packed with Pyramid Tea Bags (25 bags per pouch)



Our Graviola (Soursop) leaf tea from premium Graviola trees are non-GMO, bulk dried, and packed in individual tea bags to ensure the fresh tea in possibly every cup. It's our way of saying we care. *Caffeine Free. Graviola leaves are beneficial in supporting healthy cell growth and regeneration. It helps maintain a strong immune system aiding normal cell function. Create a relaxed and calm positive mood. Promoting healthy sleep.



25 bags
Packed with Pyramid bags



CAP
ESSENTIAL
Tea

**Where there's
Graviola
leaf tea,
there's hope**

What is the special with this TEA, Its blend with Graviola (Soursop) Leaves and Katupila with Self Life -12 months. Packed with Pyramid Tea Bags (25 bags per pouch)



Our Graviola leaves (soursop) tea from premium Graviola trees are non-GMO, bulk dried, and packaged in individual tea bags to ensure the freshest tea possible in every cup. It's our way of saying we care. *Caffeine Free. Graviola leaves are beneficial in supporting healthy cell growth and regeneration. Maintaining a strong immune system function. Aiding normal cell function. Maintaining a relaxed and calm positive mood. Promoting restful and healthy sleep. Why we are unique 75% women owned and operated.



Rest & Relax™

with soursop leaves

If you are cold,
tea will warm you;

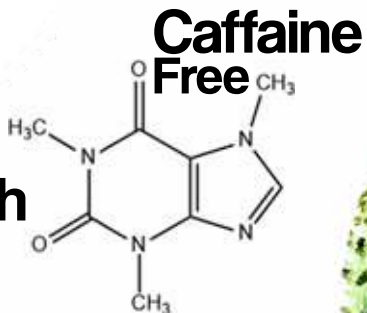
if you are too heated,
it will cool you;

If you are depressed,
it will cheer you;

If you are excited,
it will calm you.



24 month
Shelf Life



25 bags

Packed with Pyramid bags

Our Graviola leaves (soursop) tea from premium Graviola trees are non-GMO, bulk-dried and packaged in individual tea bags to ensure the freshest tea possible in every cup. It's our way of saying we care. *Caffeine Free. Graviola leaves are beneficial in supporting healthy cell growth and regeneration. Maintaining a strong immune system function. Aiding normal cell function. Maintaining a relaxed and calm positive mood. Promoting restful and healthy sleep. Why we are unique 75% women-owned and operated.

Caffeine Free



24 month
Shelf Life

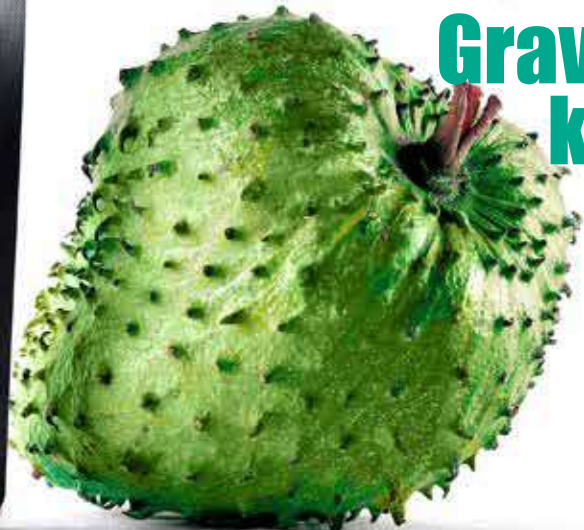
25 bags
Packed with
Pyramid bags



CAP
CEYLON
CONNECT WITH NATURE
immune
with soursop leaves

Graviola Tea is the magic key to the vault where my brain is kept

What is the special with this TEA, Its blend with Graviola (Soursop) Leafs and Katupila with Self Life -12 months. Packed with Pyramid Tea Bags (25 bags per pouch)





100%
Natural
herbs

Wine



“Thousands of wines
can take over our
minds.
Not all ecstasies are
the same!”

Annolla Grace

**Health
Benefits**

- Anti-diabetic activity
- Comparatively less glucose level
- Antioxidant activity

Soursop based
medicated wine

750mL e | Alcohol
10%



Rich in Vitamin C, Soursop Super fruit is an antioxidant that has anti cancer and antibacterial effects

750 ml glass bottle, Where wine is
Made with 100% Graviola pulp

GRAVIOLA

CRISPY CRACKERS

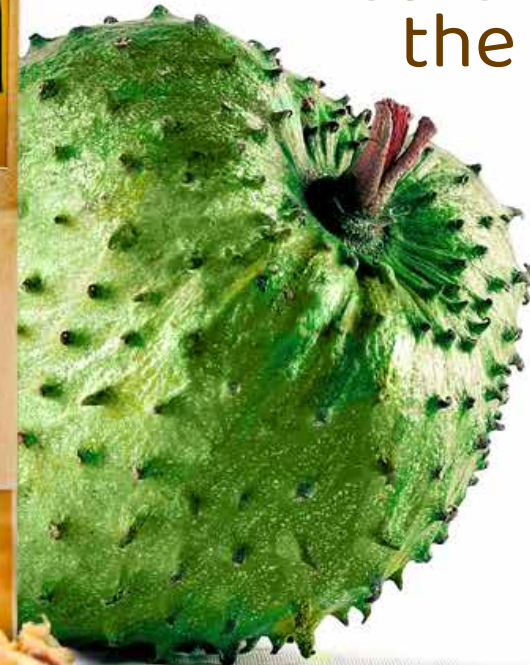
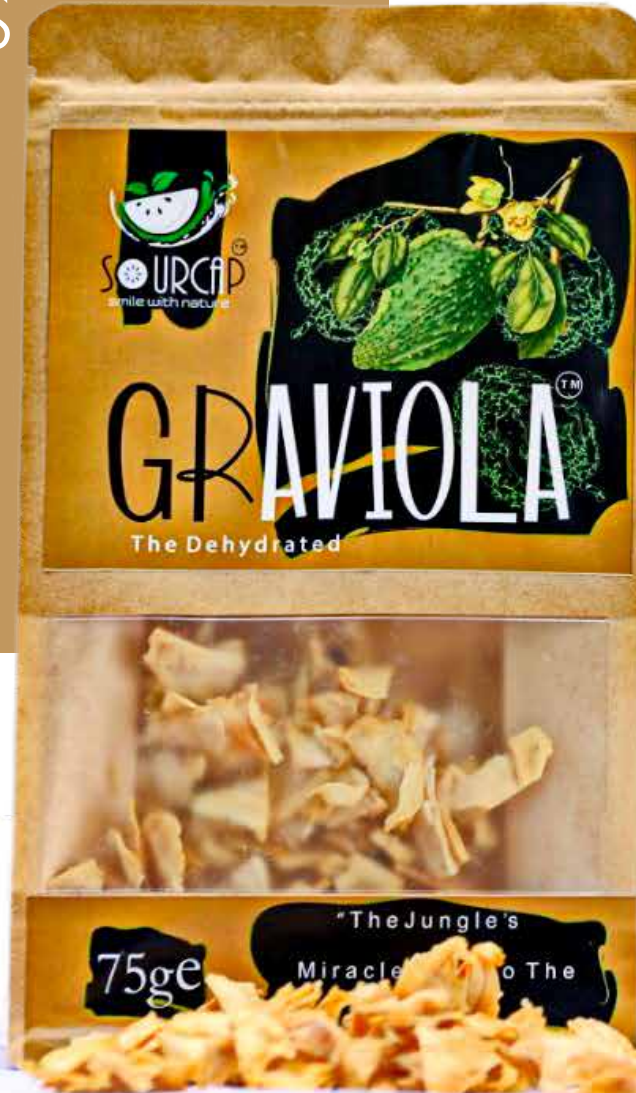


“The driver is safer when the roads are dry; the roads are safer when the driver is dry”



Graviola Dehydrated (No Added sugar or salt) with 100gm Kraft Bags with Shelf Life -12 months.

100g e



Surprising Health Benefits of the Graviola

It is a Superfruit

Graviola (*Annona muricata*), also known as Soursop, is a small evergreen tree with many bioactive compounds, that is native to the Amazon Rainforest and other tropical areas of the Americas. It produces a large, heart-shaped edible fruit which is yellow-green colour, with white flesh.

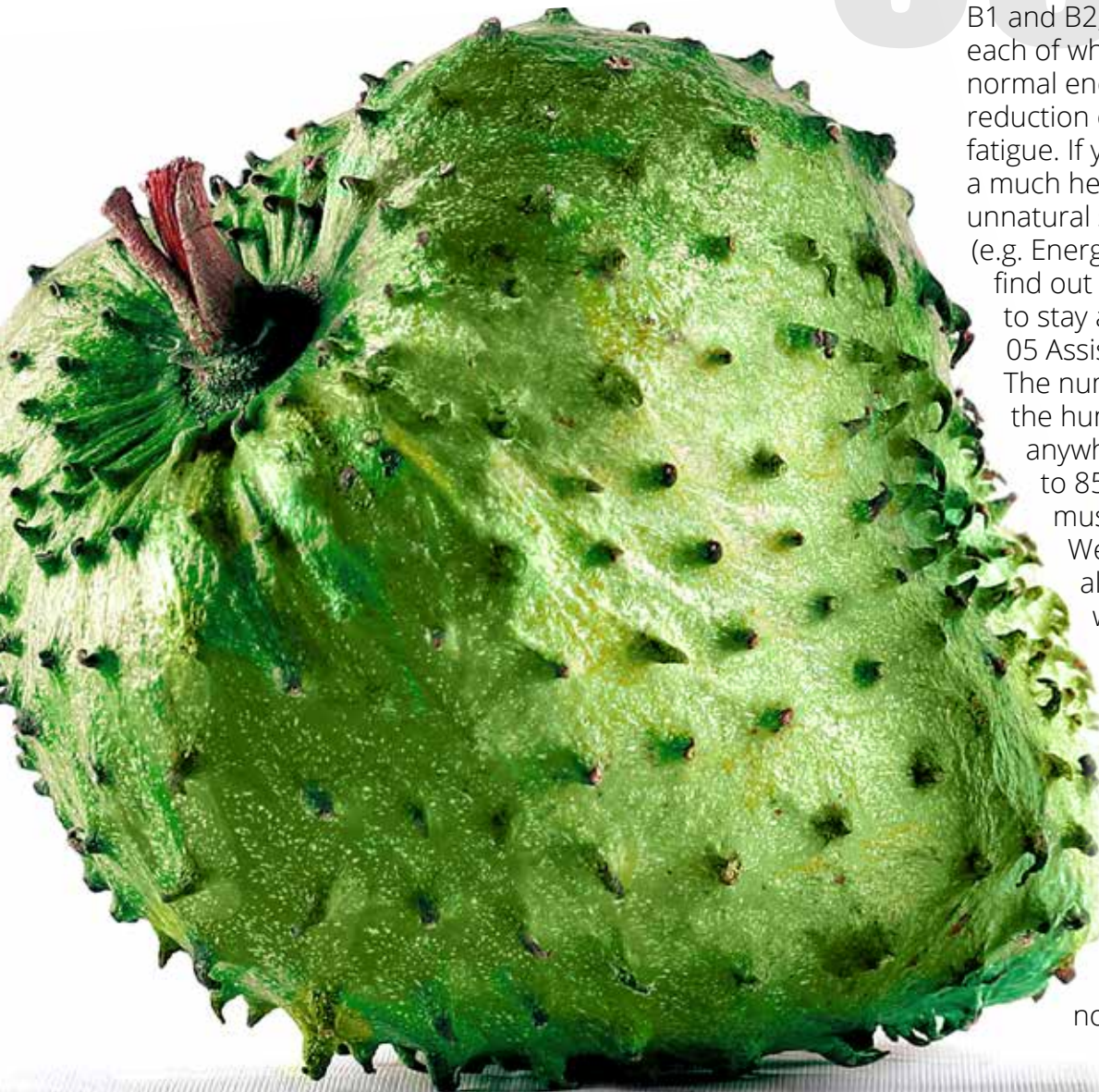
In Brazil, the juice is a popular drink known as Guanábana. Although it's only recently become popular in the West, Graviola has a long history in ancient herbal remedies and treatments, with the leaf, stem, root, bark and seed all used traditionally. Since ancient times, it has become known that Graviola is rich in vitamins and minerals, all of which contribute to the health benefits it provides:

01 Source of antioxidants

Not only does Graviola contain a bounty of vitamins and minerals, but the stem, bark and leaves are rich in antioxidants, which help the body fight against free radical damage to cells.

02 May regulate blood glucose

Certain ingredients in Graviola include phytochemicals, which may help to regulate blood glucose levels and prevent spikes. Maintaining a healthy blood sugar level is important because it can help protect the vessels that supply blood to important organs, such as the heart.



03 Contributes to energy levels

Graviola contains Vitamins B1 and B2, and Magnesium, each of which contributes to normal energy levels and the reduction of tiredness and fatigue. If you're flagging, they're a much healthier alternative to unnatural sources of caffeine (e.g. Energy drinks). You can find out more about how to stay alert naturally here.

05 Assists muscle function
The number of muscles in the human body can range anywhere between 640 to 850 - that's a lot of muscles to support!

We use our muscles all the time, even when we don't know it, so making sure they have the support they need is essential. Graviola contains Potassium and Calcium, both of which contribute to the maintenance of normal muscle function

04 Helps support the immune system

A healthy immune system is essential for helping the body to fight any nasties and keep illnesses at bay. Vitamin B1 and Zinc (both of which can be found in Graviola) can give the immune system a helping hand. Graviola leaf is said to be high in antioxidants.

05 Assists muscle function

The number of muscles in the human body can range anywhere between 640 to 850 - that's a lot of muscles to support! We use our muscles all the time, even when we don't know it, so making sure they have the support they need is essential. Graviola contains Potassium and Calcium, both of which contribute to the maintenance of normal muscle function.

Why Graviola

BENEFICIAL FOR HEART AND PREVENTS NERVE DAMAGE

Vitamin B1 in soursop accelerates metabolism, blood circulation and prevents nervous disorders. It also contains vitamin B2, which is vital for the body's energy production, fat storage, the functioning of the nervous system and maintenance of heart muscle.

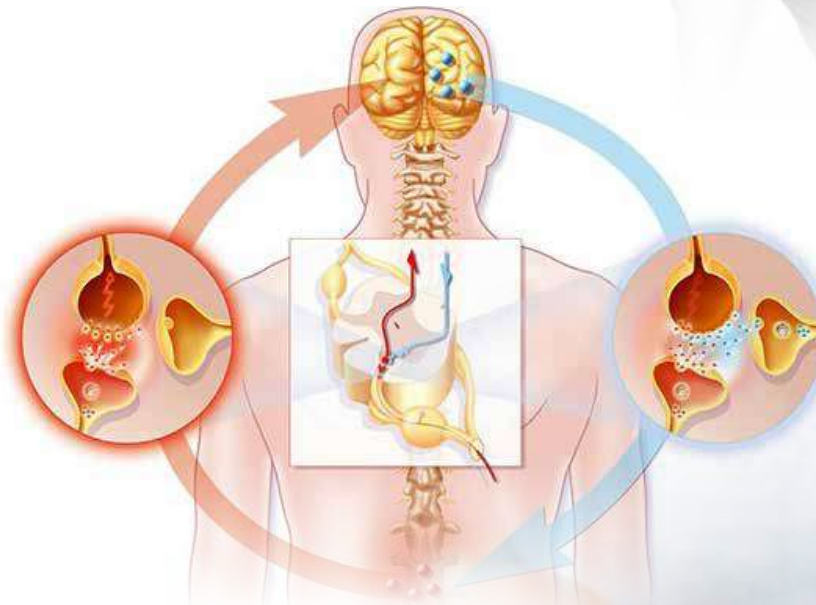


TREATMENT OF HEMORRHOID AND INFANT DIARRHEA

Soursop is effective in curing hemorrhoids. For this purpose, squeeze the fruit to take out at least one glass of water and drink it twice a day in the morning and afternoon for relief. In the case of infant diarrhea, 2-3 tablespoons of this water should be given to infants.

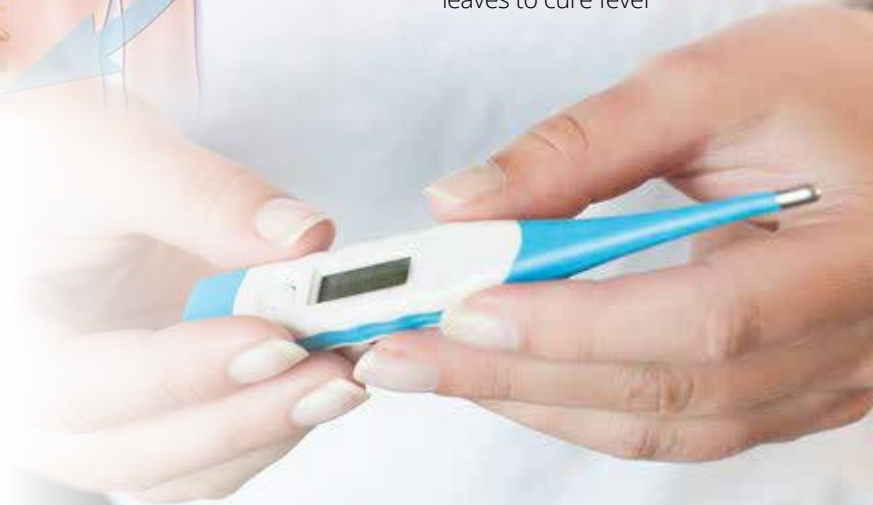
NATURAL CURE FOR ARTHRITIS AND RHEUMATISM

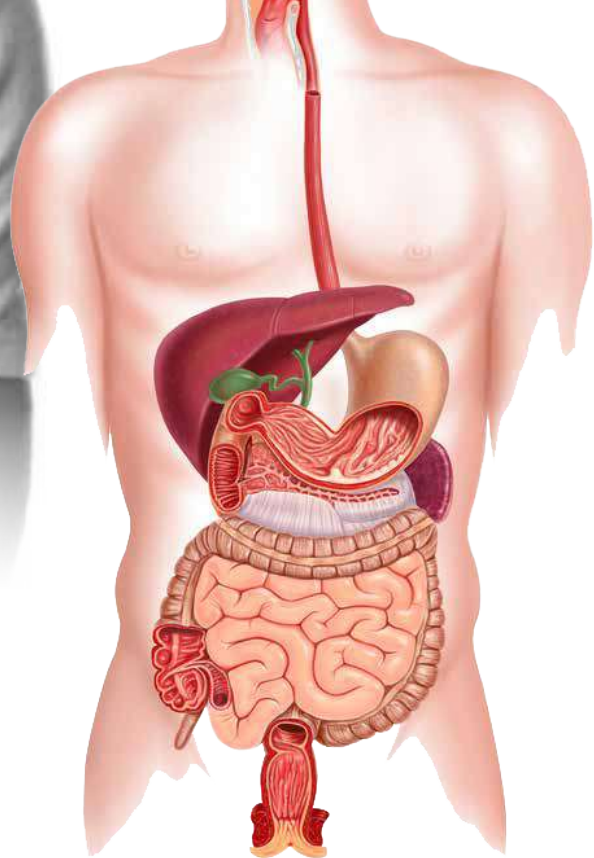
The topical application of this infusion is known to ease the pain and inflammation experienced due to arthritis and rheumatism. You can dip a clean cloth in warm tea and apply it on to the affected area, twice a day, to enjoy better relief..



TREATMENT OF FEVER

Tea made from soursop helps to lower the body temperature. In Africa, children were often bathed in Soursop leaves to cure fever.





RELIEVES CONSTIPATION

Since the fruit is rich in soluble and insoluble fibers it relieves constipation by adding bulk to stool and facilitating its easy elimination from the body

GOOD FOR YOUR LIVER

The tea made from soursop leaves is known to be a liver tonic. Along with losing the liver disorders, it also shields the liver. It is also ideal to treat diseases affecting the gallbladder, including gallstones



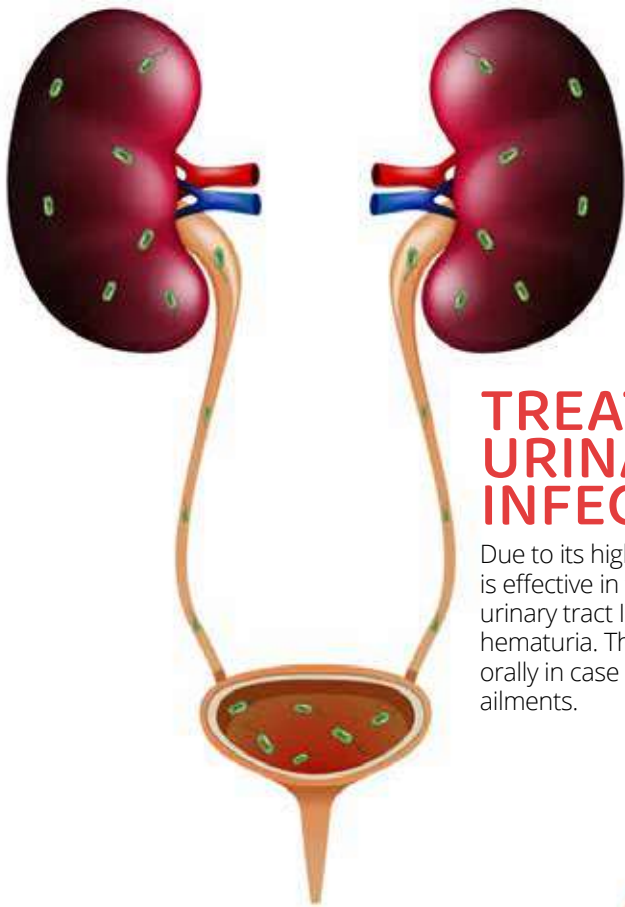
PROMOTES SLEEP

Soursop fruit contains a chemical called tryptophan, which promotes sleepiness and relaxation. It is thus, beneficial for insomniacs. Soursop leaves are often used in aromatherapy and infusions for sleep. Soursop fruit helps in controlling blood pressure and hypertension.

NATURAL DIURETIC

The flesh of this fruit is nearly 84% water which hydrates your body. It acts as a natural diuretic to treat edema or retention of water



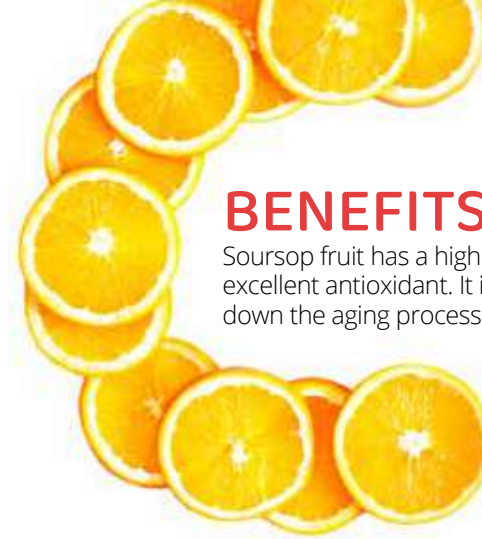


TREATMENT OF URINARY TRACT INFECTIONS

Due to its high moisture content soursop is effective in treating and preventing urinary tract Infections (UTI), urethritis and hematuria. The juice of the fruit can be taken orally in case of urethritis, hematuria and liver ailments.

RELIEVES PAIN

The leaves of the soursop plant are believed to have analgesic properties that can relieve pain. These leaves are often chewed or applied to open wounds Their juice is effective in healing the wound while relieving pain from an injury. In case of excess pain, boil 20 soursop leaves in 5 cups of water to 3 cups are left and drink 3/4 cup of this concoction once in a day for relief.

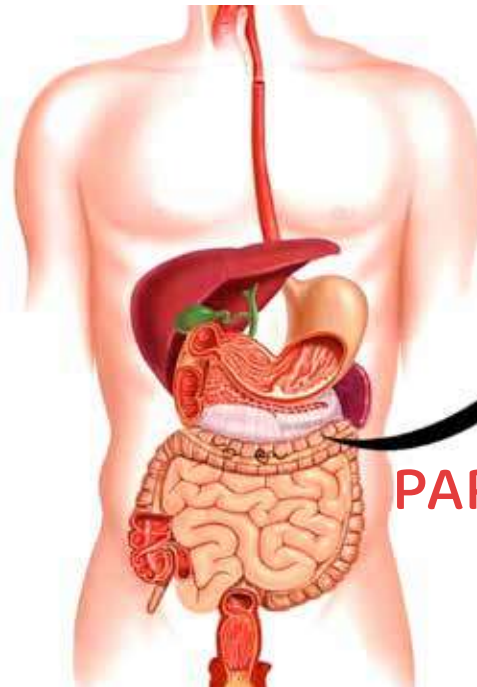


BENEFITS OF VITAMIN C

Soursop fruit has a high content of vitamin C which is an excellent antioxidant. It increases endurance and slows down the aging process

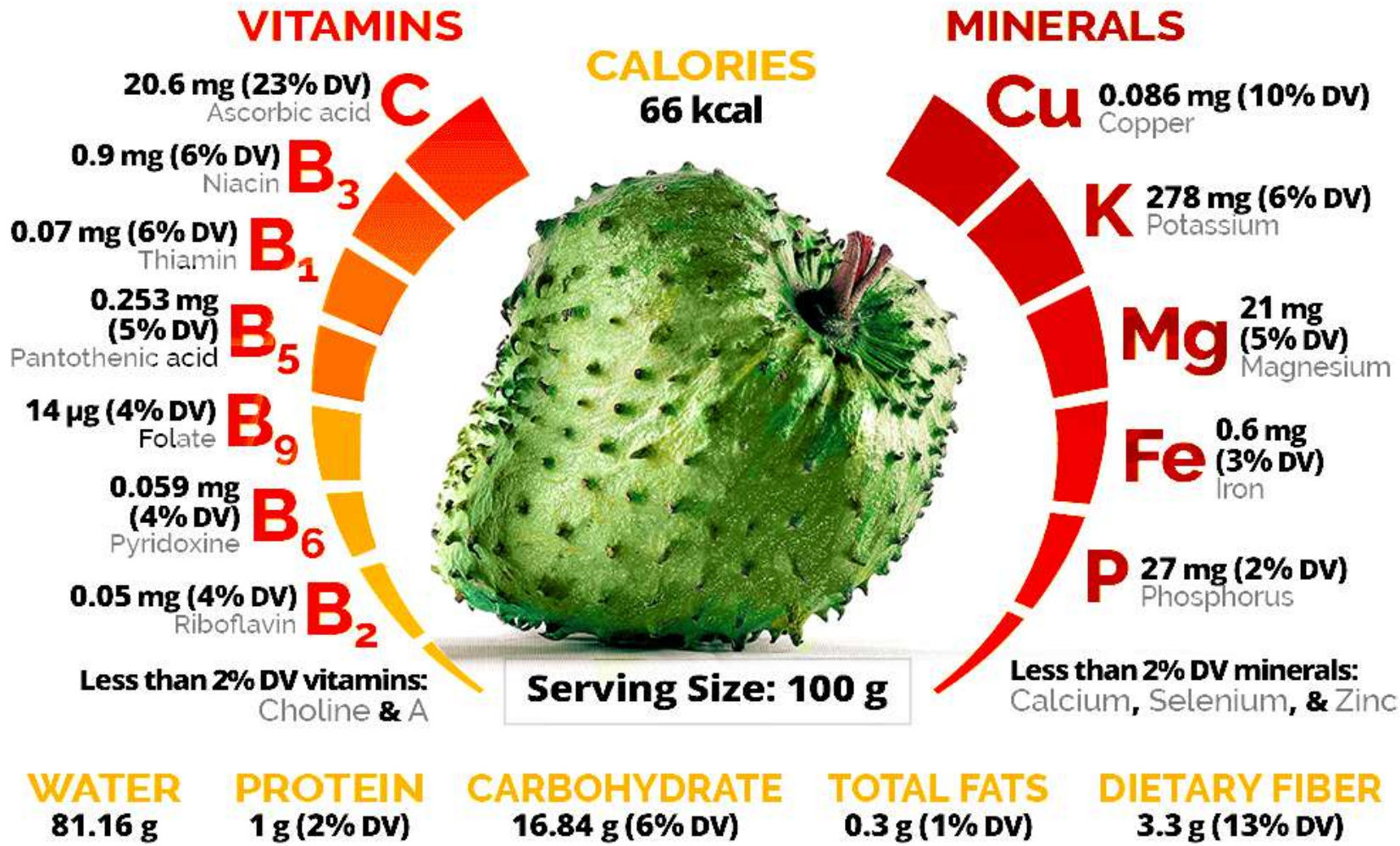
FIGHTS FREE RADICALS

The ascorbic acid in soursop fruit increases the number of antioxidants in the body which play an important role in fighting the free radicals, thereby keeping several infections and disorders at bay.



KILLS PARASITES INSIDE

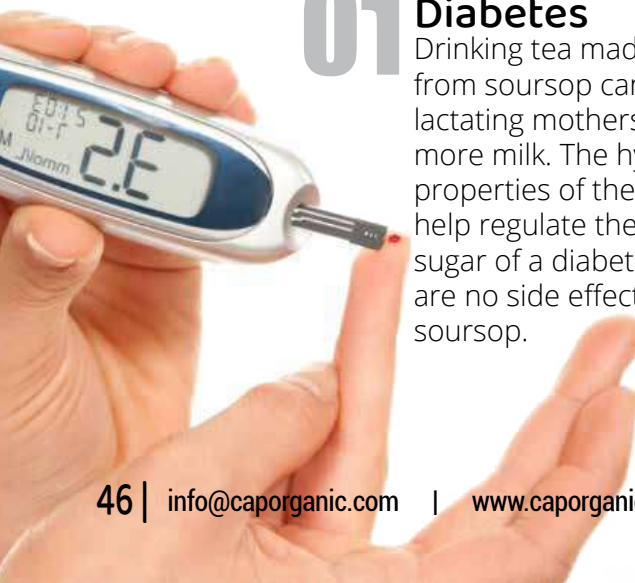
The Body Soursop is loaded with nutrients that are vital for the overall development of the body. The nutrients amino Acids, ascorbic acid calcium carbohydrates on phosphorus thiamine, fibers and riboflavin can inhibit parasites inside the body



HEALTH BENEFITS OF SOURSOP

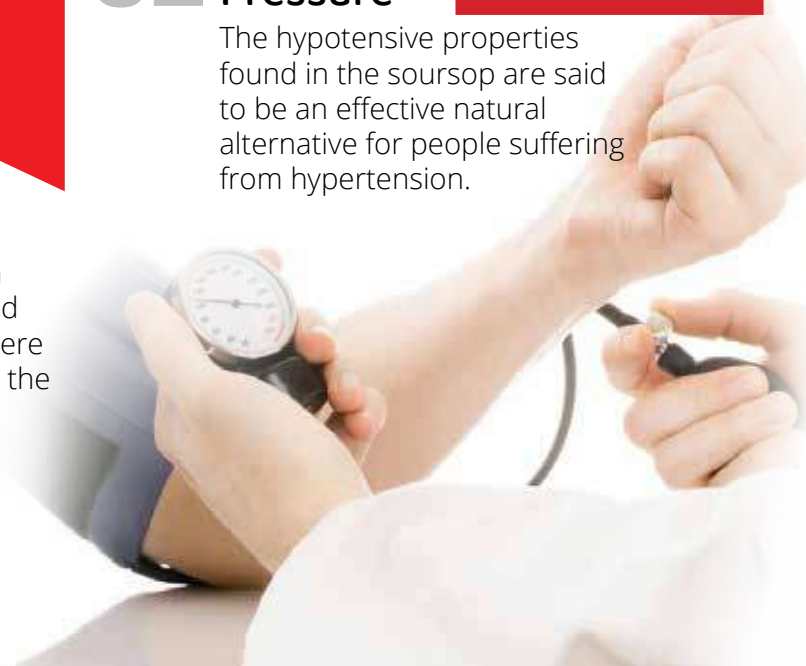
01 Diabetes

Drinking tea made from soursop can help lactating mothers to produce more milk. The hypoglycemic properties of the soursop can help regulate the level of blood sugar of a diabetic person. There are no side effects of drinking the soursop.



02 High Blood Pressure

The hypotensive properties found in the soursop are said to be an effective natural alternative for people suffering from hypertension.



03 Milk Production

Drinking tea made from soursop can help lactating mothers to produce more milk.



04 Antimicrobial Properties

Scientific studies show that soursop has the following antimicrobial properties:

- Antimalarial
- Antiphlastic
- Antiviruses
- Antibacterial



05

Bone Health

Soursop leaves contain at least 25 percent calcium, which plays an integral part in keeping the bones strong and healthy



06

Energy Booster

Thiamine can be found in soursop. This essential vitamin converts the sugar in the human body into energy.



07

Herpes

People suffering from herpes should drink soursop leaves tea in order to prevent outbreaks.

08

Stress Reliever

Just like chocolates and other sugary foods, soursop can fix a woebegone mood.



09

Nerves

Tension nerves can appear anytime. So in order to keep the nerves, calm drinking soursop can be the immediate and natural solution



10

Muscle Cramps

Soursop has potassium, which prevents the development of the muscle cramps.

11

Constipation

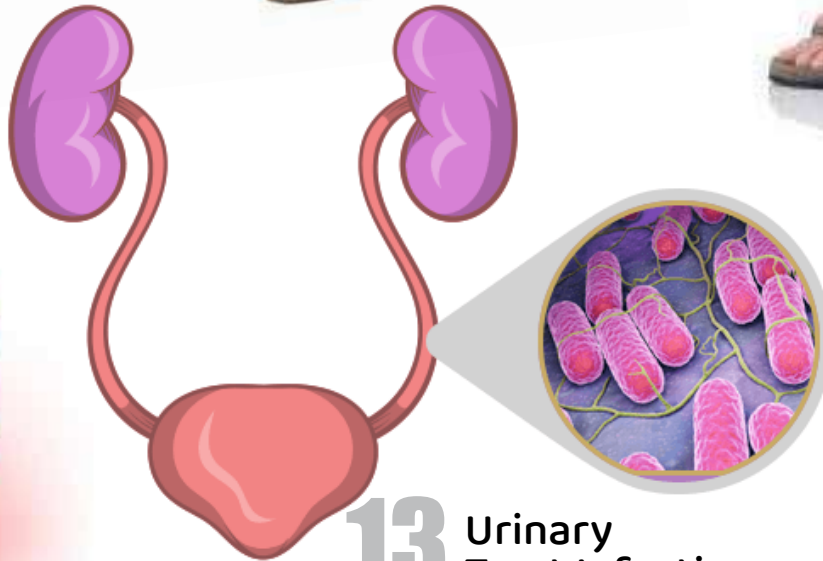
Fiber is present in every soursop drinking tea made from soursop leaves that can address this digestive problem.



12

Cholesterol Count

The niacin found in the soursop can help regulate the bad cholesterol, as well as boosting the good cholesterol.



13

Urinary Tract Infection

According to scientific research, vitamin C stops the accumulation of bacteria in the urinary tract of the human body. Thus, preventing the development of an infection. The soursop contains vitamin C.



14

Anemia

A great amount of iron can be found in soursop leaves. In case you are not aware, lack of iron in the human body is the primary reason for anemia.



15 Pregnancy

The folate, a B vitamin, helps a pregnant woman away from developing any deficiency. Soursop contains folate.



18

Immune System Booster

In order to improve the function of the immune system, drinking soursop leaves tea & fruit juice can be a great idea. Researchers have found that soursop leaf tea can help contribute to fat loss by increasing the body's metabolism.



20

Anticarcinogenic Properties

According to the Journal of Natural Products, the soursop fruits & leaves are considered 10,000 times more effective than the Adriamycin, a drug used in chemotherapy.



16

Migraine

The excruciating pain brought by a migraine is so annoying. The riboflavin present in soursop leaves can address this problem.



19

Doresopathy

Back pain can be lessened when drinking soursop leaf tea & fruit juice.



17

Rheumatoid Arthritis

The painful sensation throughout the body caused by rheumatoid arthritis can be relieved by using soursop.

The soursop tree is low-branching and bushy but slender because of its up-turned limbs and reaches a height of 25 or 30 ft (7.5-9 m). Young branchlets are rusty-hairy. The malodorous leaves, normally evergreen, are alternate, smooth, glossy, dark green on the upper surface, lighter beneath; oblong, elliptic or narrowly obovate, pointed at both ends, 2 1/2 to 8 in (6.25-20 cm) long and 1 to 2 1/2 in (2.5-6.25 cm) wide. The flowers, which are borne singly, may emerge anywhere on the trunk, branches or twigs. They are short stalked, 1 1/2 to 2 in (4-5 cm) long, plump, and triangular-conical, the 3 fleshy, slightly spreading, outer petals yellow-green, the 3 close-set inner petals pale-yellow.

The fruit is more or less oval or heart-shaped, sometimes irregular, lopsided or curved, due to improper carper development or insect injury. The size ranges from 4 to 12 in (10-30 cm) long and up to 6 in (15 cm) in width, and the weight may be up to 10 or 15 lbs (4.5-6.8 kg). The fruit is compound and covered with a reticulated, leathery-appearing but tender, inedible, bitter skin from which protrude few or many stubby, or more elongated and curved, soft, pliable "spines". The tips break off easily when the fruit is fully ripe. The skin is dark-green in the immature fruit, becoming slightly yellowish-green before the mature fruit is soft to the touch. Its inner surface is cream-colored and granular and separates easily from the mass of snow-white, fibrous, juicy segments—much like flakes of

raw fish—surrounding the central, soft-pithy core. In aroma, the pulp is somewhat pineapple-like, but its musky, subacid to acid flavor is unique. Most of the closely-packed segments are seedless. In each fertile segment, there is a single oval, smooth, hard, black seed, 1/2 to 3/4 in (1.25-2 cm) long; and a large fruit may contain from a few dozen to 200 or more seeds

Graviola in the World

Origin and Distribution

Oviedo, in 1526, described the soursop as abundant in the West Indies and in northern South America. It is today found in Bermuda and the Bahamas, and both wild and cultivated, from sea-level to an altitude of 3,500 ft (1,150 m) throughout the West Indies and from southern Mexico to Peru and Argenti-

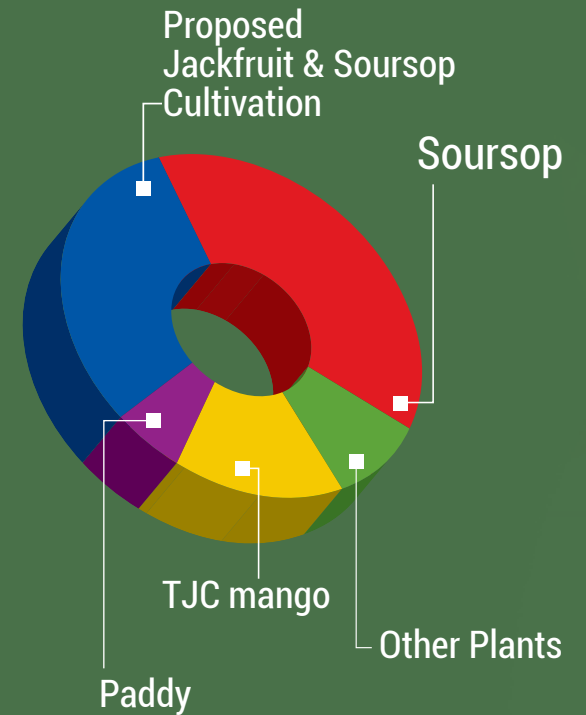
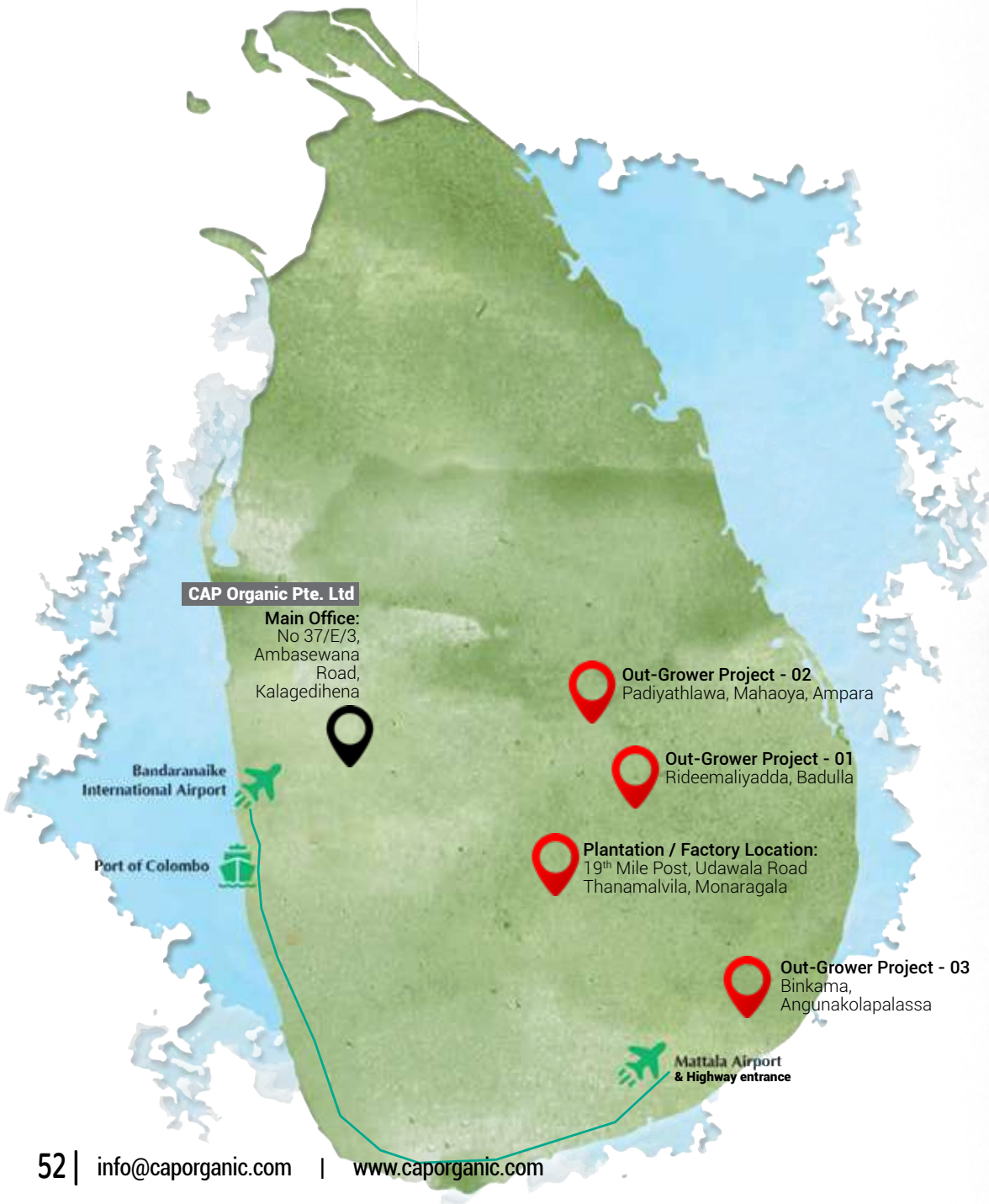


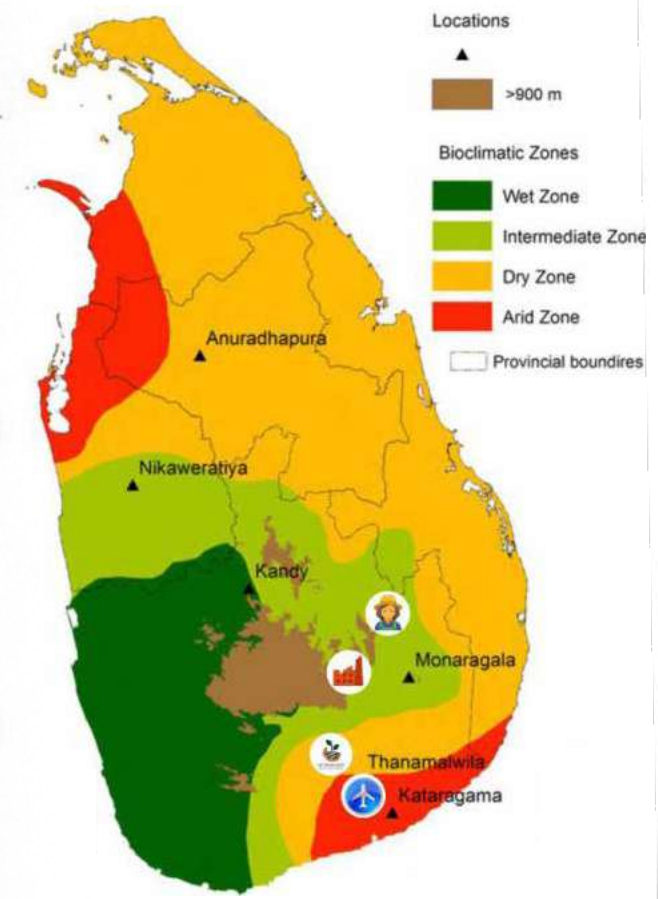
na. It was one of the first fruit trees carried from America to the Old World Tropics where it has become widely distributed from southeastern China to Australia and the warm lowlands of eastern and western Africa. It is common in the markets of Malaya and Southeast Asia. Very large, symmetrical fruits have been seen on sale in South Vietnam. It became well

established at an early date in the Pacific Islands. The tree has been raised successfully but has never fruited in Israel. In Florida, the soursop has been grown to a limited extent for possibly 110 years. Sturtevant noted that it was not included by Atwood among Florida fruits in 1867 but was listed by the American Pomological Society in 1879. A tree fruited at

the home of John Fogarty of Manatee before the freeze of 1886. In the southeastern part of the state and especially in the Florida Keys, it is often planted in home gardens.

Total land extends 52 acres



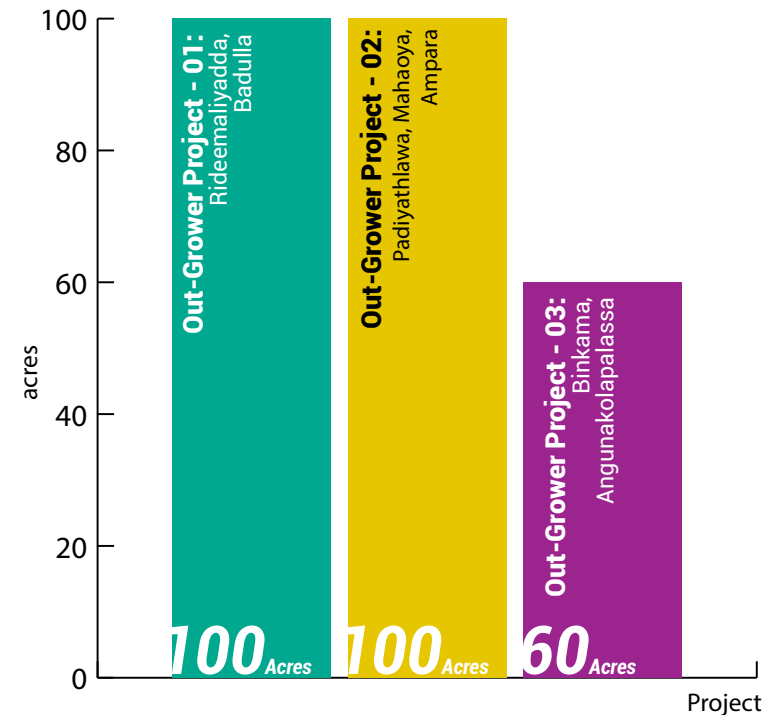


A sustainable project by
CAP Green Forest (Pvt) Ltd.

Out-Grower Project

(with Ministry of Agriculture & SAPP)

We have started two projects with MOA (The Ministry of Agriculture) & SAPP (Smallholder Agribusiness Partnerships Programme) as a business the promotor Social and Economic Development priority is paramount in the people of Monaragala district. The women population has recorded around 49% of the total population of the district. By considering the above situation, CAP Green Forest Private Limited has kept the initial step to uplift 500 women Farmers in Monaragala with the support of the CAP Farmer Foundation and later to increase up to 3000. Women Farmer the Monaragala Association (WFMA) was established in May 2017 and the organization is located in the area of Monaragala district of Sri Lanka. WFMA believes rural minority women have often been neglected in terms of social and economic development and the lack of resources has stagnated rural development. WFMA is the first woman owned and operated association in the area of Monaragala that aiming women's social and economic development through cultivation.



i) How We Support Them – Out Grower by back system

As per the proposed system, the social and economic wellbeing of the selected women are expected to uplift. The selected women farmers are given technical knowledge, training and Support. Then we supply Plants materials. Their Responsibility to plant and care until harvesting and by buy back by from us with a guaranteed price. Also, this is not a full-time job that they need to engage while taking harvesting then can take another regular income with other intercrops or work as a paid farmer in our largescale land when we needed.

ii) Vision and Mission

“Economic Empowerment and eliminate poverty by increasing the Women’s income and wellbeing through, regional grown Fruits & vegetables while expanding income opportunities “

iii) Objectives/goals

- We strive to meet the needs of a growing population, to protect and preserve their farms, to help improve their lives while making agriculture more viable and rewarding
- To produce natural and environmentally friendly products
- To promote high nutritious and medical value added agricultural products
- Creating a profitable market for the products



- To extend and contribute technical knowledge to farmers and upgrade their agricultural practices
- To strengthen the productive capacity of the women members.
- To create a sense of awareness for the women folk towards sustainable agriculture production
- To corporate between our small business units (CAP Green Forest, Farmers Foundation, WMEC) which can lead to the best image in the mind of stakeholders as farmers, community, employees, shareholders and government in the long term.

CAP Processing Plant (Monaragala Mini Economic Center Development Project)





Shipping Details

Product Name	Product Number	UOM (Box)
Annolla Comfort - (Premium)	CFP01	12 pieces per cartoon (19.6x22.7x16.4cm) 6kg
Annolla Cleanse - (Premium)	CLP02	12 pieces per cartoon (19,6cm x 22,7cm x 16,4cm) 6kg
Cool Jack - (Premium)	CJP03	12 pieces per cartoon (19,6cm x 22,7cm x 16,4cm) 6kg
Annolla "Soursop Punch"	CANP03	12 pieces per cartoon (23cm x 13cm x 14cm) 4kg
CAP Cool King - (Premium)	CKP04	12 pieces per cartoon (19,6cm x 22,7cm x 16,4cm) 6kg
CAP Cool King (Pro)	CKP05	24 pieces per cartoon (45cm x 32cm x 20cm) 18kg
CAP Immune TEA	TEA03	50 units per cartoon
CAP Essential TEA	TEA01	50 units per cartoon
Graviola Crispy Crackers	DHS01	100 pieces per cartoon 10kg
Annolla - Soursop Shot	ASS01	12 pieces per cartoon (19,6cm x 22,7cm x 16,4cm) 6kg
Waraka - Jackfruit Shot	WJS02	12 pieces per cartoon (19,6cm x 22,7cm x 16,4cm) 6kg
Soursop Wine (Annolla Graze) "White Wine" - Medicated	WINE01	24 Bottles per cartoon
PineApple Sauce - Pine Sauce	SAP01	12 pieces per cartoon (19,6cm x 22,7cm x 16,4cm) 6kg
Scotch Bonnet Sauce - Nai Miris Sauce	SAN02	12 pieces per cartoon (19,6cm x 22,7cm x 16,4cm) 6kg

	Minimum Order Quantity (Boxes)	Shipping Method (EMS, DHL, Air, Sea)	Products ready in days	Trade Terms (EXW,FOB, CNF, CIF, DDU, DDP, DAP etc)	Payment Terms (TT, LC, DA/DP)
	160	As per the order	14 days	EXW,FOB, CNF, CIF, DDU, DDP, DAP	1.) 50% advance paymnet on conformation the order 2.) Balance payment on TT or LC
	160	As per the order	14 days	EXW,FOB, CNF, CIF, DDU, DDP, DAP	1.) 50% advance paymnet on conformation the order 2.) Balance payment on TT or LC
	160	As per the order	14 days	EXW,FOB, CNF, CIF, DDU, DDP, DAP	1.) 50% advance paymnet on conformation the order 2.) Balance payment on TT or LC
	160	As per the order	14 days	EXW,FOB, CNF, CIF, DDU, DDP, DAP	1.) 50% advance paymnet on conformation the order 2.) Balance payment on TT or LC
	160	As per the order	14 days	EXW,FOB, CNF, CIF, DDU, DDP, DAP	1.) 50% advance paymnet on conformation the order 2.) Balance payment on TT or LC
	75	As per the order	14 days	EXW,FOB, CNF, CIF, DDU, DDP, DAP	1.) 50% advance paymnet on conformation the order 2.) Balance payment on TT or LC
	1	As per the order	21 days	EXW,FOB, CNF, CIF, DDU, DDP, DAP	1.) 50% advance paymnet on conformation the order 2.) Balance payment on TT or LC
	1	As per the order	21 days	EXW,FOB, CNF, CIF, DDU, DDP, DAP	1.) 50% advance paymnet on conformation the order 2.) Balance payment on TT or LC
	1	As per the order	21 days	EXW,FOB, CNF, CIF, DDU, DDP, DAP	1.) 50% advance paymnet on conformation the order 2.) Balance payment on TT or LC
	160	As per the order	14 days	EXW,FOB, CNF, CIF, DDU, DDP, DAP	1.) 50% advance paymnet on conformation the order 2.) Balance payment on TT or LC
	160	As per the order	14 days	EXW,FOB, CNF, CIF, DDU, DDP, DAP	1.) 50% advance paymnet on conformation the order 2.) Balance payment on TT or LC
	100	As per the order	14 days	EXW,FOB, CNF, CIF, DDU, DDP, DAP	1.) 50% advance paymnet on conformation the order 2.) Balance payment on TT or LC
	160	As per the order	14 days	EXW,FOB, CNF, CIF, DDU, DDP, DAP	1.) 50% advance paymnet on conformation the order 2.) Balance payment on TT or LC
	160	As per the order	14 days	EXW,FOB, CNF, CIF, DDU, DDP, DAP	1.) 50% advance paymnet on conformation the order 2.) Balance payment on TT or LC

Shipping Arrangement



Glass Bottles

Volume	= 1 Pallet (1.1m x 1.1m x 1.6m = 1.94 CMB)
1 Pallet	= 210 Cartons (Carton - 165mm (W) x 225mm (L) x 195mm (H)) 6kg)
Total	= 2520 Bottles/Pallet (210cartons x12 Bottles) Aprox.
Gross Weight	= 1260kg/Pallet

Volume = 1 x 20ft = 10 Pallets | 10 Pallets = 2100 Cartons
Total 25,200 Bottles/20ft | Aprox. Gross Weight - 12,600kg

Aluminum Cans

Volume	= 1 Pallet (1.0m x 1.2m x 2m = 2.40 CMB)
1 Pallet	= 330 Cartons (Carton - 165mm (W) x 225mm (L) x 195mm (H)) 3.500kg)
Total	= 3960 Cans/Pallet (330cartons x12 Cans)
Aprox. Gross Weight	= 1155kg/Pallet
1 CMB	= 137 Cartons (Total 482kg/CBM)
Total	=1644 Cans/CMB (137cartons x12 Bottles)
Aprox. Gross Weight	= 482kg/CBM

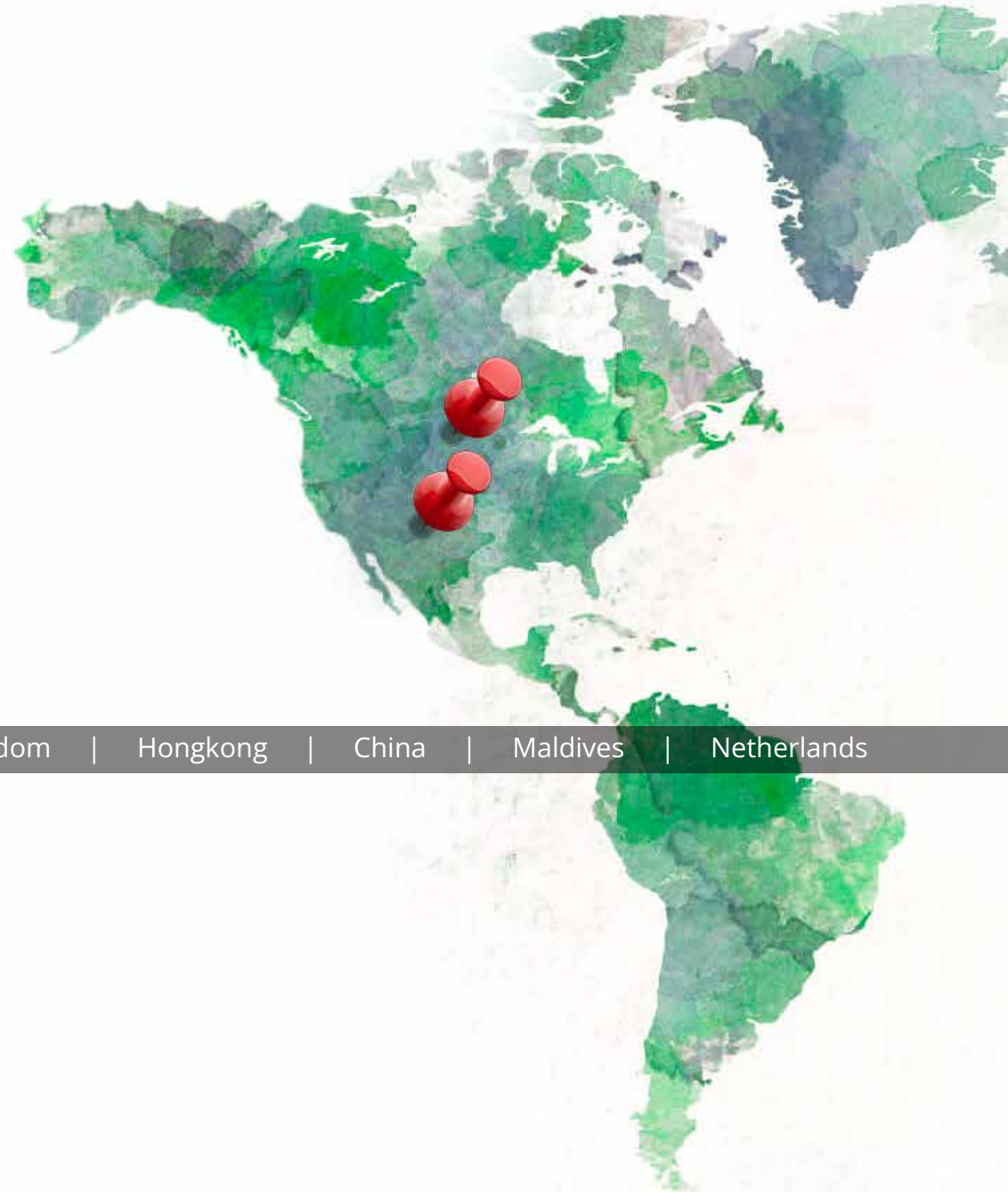
Volume = 1 x 20ft = 10 Pallets | 10 Pallets = 3300 Cartons
Total 39,600 Cans/20ft | Aprox. Gross Weight - 11,550kg

CAP Herbal Tea

Volume	= 1 Pallet (1.0m x 1.2m x 2m = 2.40 CMB)
1 Pallet	= 29 Cartons (29cartons x 50 pouches/Canister - 395mm (W) x 445mm (L) x 390mm - 3.500kg)
Total	=1450 Pouches/Pallet (29cartons x 50 pouches)
Aprox. Gross Weight	= 102kg/Pallet
1 CMB	= 12 Cartons

Volume = 1 x 20ft = 10 Pallets | 10 Pallets = 290 Cartons
Total 14,500 pouches/20ft | Aprox. Gross Weight - 1150kg

Our current business partners



Australia | Canada | United State | United Kingdom | Hongkong | China | Maldives | Netherlands



New Zealand | Czech Republic

Road Map

CEO of CAP Organic visited Northland on August 2018 to attend the Horticulture Agri conference. He has met Mr. Wim Damsteegt, Partner & CEO of Dutch Greenery in the Netherlands (The largest seed manufacturing company in the world)



CEO of CAP Organic visited India in November 2018 to attend post harvesting conference. He has met Mr. Ashvin Sunny, chairman of AGRIPLAST (Largest greenhouse manufacture in south Asia)



Mr. Jeroen Baas Partner and Post harvesting specialist of Baas Agricultural Services -Thailand has visited the CAP Green farm and given to worth instruction to harvesting and post harvesting technology to protect our crops.



We, CAP Organic has made a strong agreement between Norwegian and Chinese company to trade and marketing our value-added product in their countries.

Several meetings and negotiations had with both parties, the finally all have come to the final decision. So in 2021, our products will be sold in the worldwide.



The Managing director of The Graviola Tea Company in the USA visited our farm in February 2019 and inspected the soursop plantation and Gaviola leaf tea making process. We, CAP Organic and The Graviola Tea Company made a strong agreement, We are exporting every month Graviola leaf tea to the USA

The Norwegian specialist visited our land in 2016

The Norwegian Crop specialist visit our lands and gave to valuable advice on how to do 100% organic cultivation





CEO of CAP Organic visited China to attend International Canton Fair in 2018

They provide one-stop agricultural solutions for farmers and agribusiness from planting to sales. It will become the most professional international agricultural expo in China and provide one-stop production and marketing platform for global high-quality agricultural products. The exhibition will gather more than 20 countries and regions to bring the best agricultural products and agricultural technology to the exhibition.

Agricultural planting machinery; water-saving irrigation devices; agricultural facilities and equipment; agricultural and sideline product processing machinery; signature agricultural machinery for the production of tea, edible fungus, etc.; garden machinery; agricultural transport machinery; engineering machinery that is applicable in agriculture and various kinds of agricultural machinery accessories.

The expo will consist of 4 special exhibitions +2 special conferences; In addition, during the exhibition, "recommended products for world agricultural expo every year" will be selected and certificates will be issued.



The Australian soil and water specialist has visited us at the end of 2015 and did the soil testing with a soil nutrition analyst.

And also we found a good water source for a tube well. We know that soil is a key element of agriculture. Without it we would not be able to grow the plants, which are used as food for both humans and animals. There are two important aspects we are discuss here with soil properties that are concerned. First, we focus on its hydraulic conductivity, the ability of the soil to manage, hold or drain water. Second, we look at its nutrient management, we refer to the chemical as well as mineral make-up of the soil as the consistency as well as soil texture every soil is a mixture of three main competent sands, clay and silt.



CEO of CAP Green attends to the Agri Technica Asia

– Largest Agri Conference in Bangkok 2018



The study of post harvesting and value addition technology is most important, Harvested fruits and vegetables require adequate and advanced post-harvest processing technologies for minimizing the qualitative as well as quantitative losses after harvesting. Nearly 40% of fruits and vegetables are wasted every year due to improper handling, storage, packaging, and transportation. Value-added agriculture may also refer to increasing the economic value of a commodity through particular production processes, e.g., organic produce, or through regionally branded products that increase consumer appeal and willingness to pay a premium over similar but undifferentiated products.

Value-added agriculture refers more generally to that increase the value of primary agricultural commodities. Value-added agriculture may also refer to increasing the economic value of a commodity through particular production processes, e.g., organic produce, or through regionally branded products that increase consumer appeal and willingness to pay a premium over similar but undifferentiated products. It can also be described as the process that transforms the raw agricultural product into something new through packaging, processing, cooling, drying, extracting, and other processes that change a product from its original raw form. [1] As a result of this transformation, the customer base of a product and revenue sources for the producer are expanded.

Gulfood
live
in-person

CEO of CAP Organic visited Dubai to attend Gulfood live in-person 2021

The world's largest event for F&B processing, packaging and ingredients, enabling F&B manufacturers to deliver best-quality products through the most advanced machinery & production solutions.

The annual event that matters for food manufacturing globally, Gulfood Manufacturing returns live in-person from 7-9 November 2021 at Dubai World Trade Centre.

Every year the world's biggest food manufacturers take over the show floor to unveil their advanced technologies – from production to processing to packaging.



Articles

ECHO ENTREPRENEURSHIP



Fruits of Agribusiness

How CAP Green is making

SUNDAY 2 AUGUST 2020 | C5

with purchasing all natural products with better value for nutrition and overall health. I want to spread awareness of how usability the popular beverages we have in the local markets are and provide a better alternative. Other countries have realised the value of a healthy food culture and have already taken steps to promote local and beverages that are healthier. We must also have programmes in place to build healthier future generations.

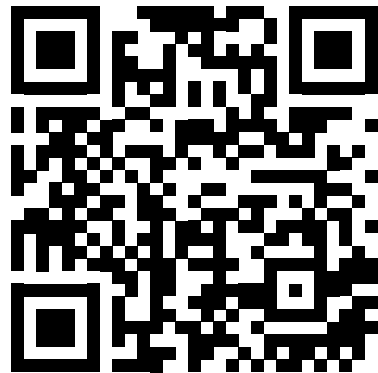
Business strong amidst COVID-19

Although many business have struggled due to the ongoing Coronavirus pandemic, business is going strong for Barja as we are fortunate to be

දැව් අහෝදා රට පුරා විවිධ කට්ටි කන හරහාය

2020 ඔක්තෝබර් මාස 4 වැනිදා

YouTube interviews



more details

Television interviews





Listen first up, to the life story and vision of the young entrepreneur that has enabled him position Sri Lanka with innovative fruit products creating avenues for growth and self employment of youth.



CERTIFICATE

CERTIFICATE No: CU 88861EU-01.2022
REGISTRATION No: CU 88861

Field of attention:
Organic production methods
Organic EU

Issued to:
CAP Organic (Pvt) Ltd
37/E/3, Ambasewana Road, Kalagedihena

11875 Gampaha

SRI LANKA

Standard:
Control Union Certifications Production Standards and Regulation (EC) No 834/2007 and Regulation (EC) No 889/2008 on organic production of agricultural products and indications referring thereto on agricultural products and foodstuffs, including the amending regulations, and Control Union Certifications (CU) Inspection Regulations.

Valid until: 15 June 2023

Control Union Certifications declares to have inspected the unit(s), and/or product(s) of the above mentioned client, and has found them in accordance with the standards mentioned above.
This certificate covers the unit(s), and/or product(s) as mentioned in the authenticated annex of this certificate. This document has been issued on the basis of Article 28(1) of Regulation (EC) No 834/2007 and of Regulation (EC) No 889/2008. The declared operator has submitted his activities under control, and meets the requirements laid down in the named Regulations.
Labelling of the product must state CU/CU code number.
This certificate remains in force until further notice, provided that the participant continues to meet the conditions as laid down in the (blank) contract with Control Union Certifications B.V. and verified in inspections by Control Union Certifications B.V.

LX-820-149
Date of certification:
21 July 2022
Last date of inspection: 15 June 2022
Place and date of issue:
Colombo 00700, 21 July 2022

Drawn up by:

Member of the Issuing Director
M.K. Gunawardena

Certifier:
Control Union Certifications B.V.
Meesdreef 4-6
8011 BC ZWOLLE
The Netherlands
http://www.cucontrolunion.com
tel: +31(0)39-4260100



CERTIFICATE

CERTIFICATE No: CU 88861NOP-01.2022
REGISTRATION No: CU 88861

Field of attention:
Organic production methods
USDA-NOP
CROPS, HANDLING / PROCESSING

Issued to:
CAP Organic (Pvt) Ltd
37/E/3, Ambasewana Road, Kalagedihena

11875 Gampaha

SRI LANKA

Standard:
Certified to the USDA organic regulation, 7 CFR Part 205.

Anniversary date: 14 June 2023

Control Union Certifications declares to have inspected the unit(s), and/or product(s) of the above mentioned client, and have found them in accordance with the standards mentioned above.
Once certified, a production or handling operation's organic certification continues in effect until surrendered, suspended or revoked.
Anniversary date - when the certified operation must submit its annual update.

Effective date:
21 July 2022
Place and date of issue:
Colombo 00700, 24 August 2022



Control Union Certifications is
officially accredited by the United
States Department of Agriculture



Drawn up by:

On behalf of the Issuing Director
M.K. Gunawardena

Certifier:
Control Union Certifications B.V.
Meesdreef 4-6
8011 BC ZWOLLE
The Netherlands
http://www.cucontrolunion.com
tel: +31(0)39-4260100



TEST REPORT

(7419)089-0088

Apr 12, 2019

Report No:

Page 2 of 4

TEST RESULTS

No.	Parameters	Results	LOQ	Unit	Test Method
1	pH at 25 °C	3.7	-	-	Direct measurement by pH meter
2	Brix Value	13.4	-	g/100g	SLS 1332 Part 2 : 2008 (By Direct Refractometer Reading)
3	Energy	55.1	-	Kcal/100g	Codex Guidelines on Nutrition Labelling
4	Cholesterol	ND	0.1	mg/100g	In House Method with reference to Journal of AOAC International Vol.76, No.4, 1993 with GC-FID
5	Total Fat	0.3	-	g/100g	SLS 1427: 2011
6	Saturated fat	0.2	-	g/100g	In House Method with reference to AOAC 996.06
7	Potassium as K	63.0	-	mg/100g	FD-MTHD-034 with ICP-MS
8	Titrateable Acidity	0.2	-	g/100g	SLS 729: Appendix C : 2010
9	Total Carbohydrate	12.7	-	g/100g	Codex Guidelines on Nutrition Labelling
10	Total Sugar as sucrose	9.7	-	g/100g	SLS 586 :1982
11	Protein content	0.4	-	g/100g	CPSD-AN-00238 MTHD reference to AOAC 17th Edition, 2000
12	Salt Content (as NaCl)	0.1	-	g/100g	CPSD-AN-00267
13	Vitamin C	75.6	-	mg/100g	In House Method with HPLC-DAD
14	Total Plate Count*	12	-	cfu/ml	ISO 4833-1:2013/ SLS 516: PART 1: 2013
15	<i>Escherichia coli</i> *	ND	-	MPN/ml	ISO 7251:2005/ SLS 516 Part 12:2013
16	<i>Salmonella</i> spp.*	Absent	-	In 25.0ml	ISO 6579:2002/AMD 1:2007 SLS 516: PART 5: 2013
17	Yeast Count*	<10	-	cfu/ml	ISO 21527-1:2008 / SLS 516 Part 2 Section 1: 2013
18	Mould Count*	<10	-	cfu/ml	ISO 21527-1:2008 / SLS 516 Part 2 Section 1: 2013
19	Total coliform	ND	-	MPN/ml	ISO 4831:2006 SLS 516 Part 3 Section 1 :2013

The content of this PDF file is in accordance with the original issued reports for reference only. This Test Report cannot be reproduced, except in full, without prior written permission of the company.



TEST REPORT



Sample No.: SL:GL:2010000039

DATE : 30/06/2020

Order No. : 20100020

Report No. :2015000048

SAMPLE NOT DRAWN BY IDB-SGS FOOD LABORATORY, SRI LANKA

SAMPLE IDENTIFIED AS : BEVERAGES

COMPANY NAME CAP Organic (Pvt) Ltd
 ADDRESS No 37/E/3, Ambaswana Road,
 CITY Kalagedihena
 COUNTRY Sri Lanka
 SAMPLE DESCRIPTION SAMPLE IDENTIFIED BY THE CUSTOMER AS: GRAVIOLA COMFORT
 REF. BATCH NO: 24122019
 RECEIVED UNDER GLASS BOTTLE
 SAMPLE CONDITION 250 ml * 3
 SAMPLE RECEIVED ON 15-June-2020
 JOB START DATE 15-June-2020
 JOB END DATE 30-June-2020

TESTS	PROTOCOL	RESULT
FAT	IDB-SGS/LCHE/TM/SOP/04	NOT DETECTED (LOD 0.1%)
NON REDUCING SUGAR	IDB-SGS/LCHE/TM/SOP/09	1.0%
SALT (as SODIUM CHLORIDE)	IDB-SGS/LCHE/TM/SOP/08	0.05%
TOTAL SUGAR	IDB-SGS/LCHE/TM/SOP/06	8.1%

**** End of Report ****

Page 1 of 2

WARNING: The sample(s) to which the findings recorded herein (the "findings") relate were/verre) drawn and / or provided by the Customer or by a third party acting at the Customer's direction. The Findings constitute no warranty of the sample's representativeness of any goods and strictly relate to the sample(s). The Food Laboratory IDB-SGS Lanka accepts no liability with regard to the origin or source from which the sample(s) relate said to be extracted.

This document is issued by the Food Laboratory IDB-SGS Lanka subject to its General Conditions of Service printed overleaf, available on request or accessible at http://www.idb.gov.lk/index.php?option=com_content&view=article&id=64&Itemid=355&lang=en and <http://www.sgs.com/en/Terms-and-Conditions.aspx> and, for electronic format documents, subject to Terms and Conditions for Electronic Documents at http://www.idb.gov.lk/index.php?option=com_content&view=article&id=64&Itemid=355&lang=en and <http://www.sgs.com/en/Terms-and-Conditions/Terms-e-Documents.aspx>.

Attention is drawn to the limitation of liability, indemnification and jurisdiction issues defined therein. Any holder of this document is advised that information contained herein reflects the Food Laboratory IDB-SGS Lanka's findings at the time of its intervention only and within the limits of Client's instructions, if any. The Food Laboratory IDB-SGS Lanka's sole responsibility is to its Client and this document does not exonerate parties to a transaction from exercising all their rights and obligations under the transaction documents. This document cannot be reproduced except in full, without prior written approval of the Food Laboratory IDB-SGS Lanka. Any unauthorized alteration, forgery or falsification of the content or appearance of this document is unlawful and offenders may be prosecuted to the fullest extent of the law.

Unless otherwise stated the results shown in this test report refer only to the sample(s) tested and such sample(s) are retained only for 90 days (dry samples), 7 days (potable samples) from the date of report.

Industrial Development Board Food Laboratory IDB - SGS Lanka, 615, Galle Road, Katubeddi, Colombo, Sri Lanka. e: head@idb.lk t: +94 05 112 605010 f: +94 05 112 605002



TEST REPORT



Sample No.: SL:GL:2010000038

DATE : 30/06/2020

Order No. : 20100020

Report No. :2015000047

SAMPLE NOT DRAWN BY IDB-SGS FOOD LABORATORY, SRI LANKA

SAMPLE IDENTIFIED AS : BEVERAGES

COMPANY NAME CAP Organic (Pvt) Ltd
 ADDRESS No 37/E/3, Ambasewana Road,
 CITY Kalagedihena
 COUNTRY Sri Lanka
 SAMPLE DESCRIPTION SAMPLE IDENTIFIED BY THE CUSTOMER AS: GRAVIOLA CLEANSE
 REF: BATCH NO: 03122019
 RECEIVED UNDER GLASS BOTTLE
 SAMPLE CONDITION
 SAMPLE QUANTITY 250 ml * 3
 SAMPLE RECEIVED ON 15-June-2020
 JOB START DATE 15-June-2020
 JOB END DATE 30-June-2020

TESTS	PROTOCOL	RESULT
FAT	IDB-SGS/LCHE/TM/SOP/04	NOT DETECTED (LOD 0.1%)
NON REDUCING SUGAR	IDB-SGS/LCHE/TM/SOP/09	NOT DETECTED (LOD 0.5%)
SALT (as SODIUM CHLORIDE)	IDB-SGS/LCHE/TM/SOP/08	0.05%
TOTAL SUGAR	IDB-SGS/LCHE/TM/SOP/09	4.0% *

**** End of Report ****

WARNING: The sample(s) to which the findings recorded herein (the "findings") relate was/were drawn and / or provided by the Customer or by a third party acting at the Customer's direction. The findings constitute no warranty of the sample's representativeness of any goods and strictly relate to the sample(s). The Food Laboratory IDB-SGS Lanka accepts no liability with regard to the origin or source from which the sample(s) were said to be extracted.

This document is issued by the Food Laboratory IDB-SGS Lanka subject to its General Conditions of Service printed overleaf, available on request or accessible at http://www.idb.gov.lk/index.php?option=com_content&view=article&id=54&Itemid=355&lang=en and <http://www.sgs.com/en/Terms-and-Conditions.aspx> and, for electronic format documents, subject to Terms and Conditions for Electronic Documents at http://www.idb.gov.lk/index.php?option=com_content&view=article&id=54&Itemid=355&lang=en and <http://www.sgs.com/en/Terms-and-Conditions/Terms-e-Documents.aspx>.

Attention is drawn to the limitation of liability, indemnification and jurisdiction issues defined therein. Any holder of this document is advised that information contained hereon reflects the Food Laboratory IDB-SGS Lanka's findings at the time of its intervention only and within the limits of Client's instructions, if any. The Food Laboratory IDB-SGS Lanka's sole responsibility is to its Client and this document does not exonerate parties to a transaction from exercising all their rights and obligations under the transaction documents. This document cannot be reproduced except in full, without prior written approval of the Food Laboratory IDB-SGS Lanka. Any unauthorized alteration, forgery or falsification of the content or appearance of this document is unlawful and offenders may be prosecuted to the fullest extent of the law.

Unless otherwise stated the results shown in this test report refer only to the sample(s) tested and such sample(s) are retained only for 90 days (dry samples), 7 days (perishable samples) from the date of report.

SGS



IDB

TEST REPORT



Sample No.: SL:GL:201000038

DATE : 30/06/2020

Order No. : 20100020

Report No. :201500047

TESTS	PROTOCOL	RESULT

IDB-SGS Lanka Food Laboratory
Chemical Laboratory
Industrial Development Board

Laboratory Manager

Gajanthi Sriskandaseelan
Food Laboratory - Chemical
IDB - SGS Lanka

Page 2 of 2

WARNING: The sample(s) to which the findings recorded herein (the "Findings") relate was(were) drawn and / or provided by the Customer or by a third party acting at the Customer's direction. The Findings constitute no warranty of the sample's representativeness of any goods and strictly relate to the sample(s). The Food Laboratory IDB-SGS Lanka accepts no liability with regard to the origin or source from which the sample(s) is/are said to be extracted.

This document is issued by the Food Laboratory IDB-SGS Lanka subject to its General Conditions of Service printed overleaf, available on request or accessible at http://www.idb.gov.lk/index.php?option=com_content&view=article&id=843&Itemid=366&lang=en and <http://www.sgs.com/en/Terms-and-Conditions.aspx> and, for electronic format documents, subject to Terms and Conditions for Electronic Documents at http://www.idb.gov.lk/index.php?option=com_content&view=article&id=844&Itemid=366&lang=en and <http://www.sgs.com/en/Terms-and-Conditions/Terms-e-Document.aspx>.

Attention is drawn to the limitation of liability, indemnification and jurisdiction issues defined therein. Any holder of this document is advised that information contained hereon reflects the Food Laboratory IDB-SGS Lanka's findings at the time of its intervention only and within the limits of Client's instructions, if any. The Food Laboratory IDB-SGS Lanka's sole responsibility is to its Client and this document does not exonerate parties to a transaction from exercising all their rights and obligations under the transaction documents. This document cannot be reproduced except in full, without prior written approval of the Food Laboratory IDB-SGS Lanka. Any unauthorized alteration, forgery or falsification of the content or appearance of this document is unlawful and offenders may be prosecuted to the fullest extent of the law.

Unless otherwise stated the results shown in this test report refer only to the sample(s) tested and such sample(s) are retained only for 90 days (90 samples), 7 days (perishable samples) from the date of report.

Good for People. Good for the Planet.



CAP Green

is a Good Market approved vendor from

May 4, 2018

Good Market is a curated platform for
people creating a better world



<https://capgreen.goodmarket.global>

SGS



TEST REPORT



Sample No.: **SL:GL:201000041** DATE : 30/06/2020

Order No. : 20100020

Report No. : 2015000048

SAMPLE NOT DRAWN BY IDB-SGS FOOD LABORATORY, SRI LANKA

SAMPLE IDENTIFIED AS : BEVERAGES

COMPANY NAME CAP Organic (Pvt) Ltd
 ADDRESS No 37/E/3, Ambasewana Road,
 CITY Kalagedihena
 COUNTRY Sri Lanka
 SAMPLE DESCRIPTION SAMPLE IDENTIFIED BY THE CUSTOMER AS: GRAVIOLA COMFORT
 REF: BATCH NO: 24122019
 RECEIVED UNDER GLASS BOTTLE
 SAMPLE CONDITION
 SAMPLE QUANTITY 250 ml * 3
 SAMPLE RECEIVED ON 15-June-2020
 JOB START DATE 15-June-2020
 JOB END DATE 30-June-2020

TESTS	PROTOCOL	RESULT
ACIDITY as ANHYDROUS CITRIC ACID	SLS 729 APPENDIX C: 2010	0.3%
BENZOIC ACID	SLS 729 APPENDIX E: 2010	NOT DETECTED (LOD 10 mg/kg)
TOTAL SOLUBLE SOLIDS	SLS 729 APPENDIX B: 2010	8.0%

End of Report

IDB-SGS Lanka Food Laboratory
Chemical Laboratory
Industrial Development Board

Laboratory Manager
 Gajanthi Sriskandaselvan
 Food Laboratory - Chemical
 IDB - SGS Lanka

Page 1 of 1

WARNING: The sample(s) to which the findings recorded herein (the "Findings") relate was(were) drawn and / or provided by the Customer (or by a third party acting at the Customer's direction). The Findings constitute no warranty of the sample's representativeness of any goods and strictly relate to the sample(s). The Food Laboratory IDB-SGS Lanka accepts no liability with regard to the origin or source from which the sample(s) were said to be extracted.

This document is issued by the Food Laboratory IDB-SGS Lanka subject to its General Conditions of Service printed overleaf, available on request or accessible at http://www.idb.gov.lk/index.php?option=com_content&view=article&id=64&Itemid=355&lang=en and <http://www.sgs.com/en/Terms-and-Conditions.aspx> and, for electronic format documents, subject to Terms and Conditions for Electronic Documents at http://www.idb.gov.lk/index.php?option=com_content&view=article&id=64&Itemid=355&lang=en and <http://www.sgs.com/en/Terms-and-Conditions/Terms-e-Documents.aspx>.

Attention is drawn to the limitation of liability, indemnification and jurisdiction issues defined therein. Any holder of this document is advised that information contained herein reflects the Food Laboratory IDB-SGS Lanka's findings at the time of its intervention only and within the limits of Client's instructions, if any. The Food Laboratory IDB-SGS Lanka's sole responsibility is to its Client and this document does not exonerate parties to a transaction from exercising all their rights and obligations under the transaction documents. This document cannot be reproduced except in full, without prior written approval of the Food Laboratory IDB-SGS Lanka. Any unauthorized alteration, forgery or falsification of the content or appearance of this document is unlawful and offenders may be prosecuted to the fullest extent of the law.

Unless otherwise stated the results shown in this test report refer only to the sample(s) tested and such sample(s) are retained only for 90 days (dry samples), 7 days (perishable samples) from the date of report.

SGS



TEST REPORT



Sample No.: **SL:GL:201000040** DATE : 30/06/2020

Order No. : 20100020

Report No. : 2015000050

SAMPLE NOT DRAWN BY IDB-SGS FOOD LABORATORY, SRI LANKA

SAMPLE IDENTIFIED AS : BEVERAGES

COMPANY NAME CAP Organic (Pvt) Ltd
 ADDRESS No 37/E/3, Ambasewana Road,
 CITY Kalagedihena
 COUNTRY Sri Lanka
 SAMPLE DESCRIPTION SAMPLE IDENTIFIED BY THE CUSTOMER AS: GRAVIOLA COMFORT
 REF: BATCH NO: 201908
 RECEIVED UNDER CAN
 SAMPLE CONDITION
 SAMPLE QUANTITY 250 ml * 4
 SAMPLE RECEIVED ON 15-June-2020
 JOB START DATE 15-June-2020
 JOB END DATE 30-June-2020

TESTS	PROTOCOL	RESULT
ACIDITY as ANHYDROUS CITRIC ACID	SLS 729 APPENDIX C: 2010	0.2%
BENZOIC ACID	SLS 729 APPENDIX E: 2010	NOT DETECTED (LOD 10 mg/kg)
TOTAL SOLUBLE SOLIDS	SLS 729 APPENDIX B: 2010	8.9%

End of Report

IDB-SGS Lanka Food Laboratory
Chemical Laboratory
Industrial Development Board

Laboratory Manager
 Gajanthi Sriskandaselvan
 Food Laboratory - Chemical
 IDB - SGS Lanka

Page 1 of 1

WARNING: The sample(s) to which the findings recorded herein (the "Findings") relate was(were) drawn and / or provided by the Customer (or by a third party acting at the Customer's direction). The Findings constitute no warranty of the sample's representativeness of any goods and strictly relate to the sample(s). The Food Laboratory IDB-SGS Lanka accepts no liability with regard to the origin or source from which the sample(s) were said to be extracted.

This document is issued by the Food Laboratory IDB-SGS Lanka subject to its General Conditions of Service printed overleaf, available on request or accessible at http://www.idb.gov.lk/index.php?option=com_content&view=article&id=64&Itemid=355&lang=en and <http://www.sgs.com/en/Terms-and-Conditions.aspx> and, for electronic format documents, subject to Terms and Conditions for Electronic Documents at http://www.idb.gov.lk/index.php?option=com_content&view=article&id=64&Itemid=355&lang=en and <http://www.sgs.com/en/Terms-and-Conditions/Terms-e-Documents.aspx>.

Attention is drawn to the limitation of liability, indemnification and jurisdiction issues defined therein. Any holder of this document is advised that information contained herein reflects the Food Laboratory IDB-SGS Lanka's findings at the time of its intervention only and within the limits of Client's instructions, if any. The Food Laboratory IDB-SGS Lanka's sole responsibility is to its Client and this document does not exonerate parties to a transaction from exercising all their rights and obligations under the transaction documents. This document cannot be reproduced except in full, without prior written approval of the Food Laboratory IDB-SGS Lanka. Any unauthorized alteration, forgery or falsification of the content or appearance of this document is unlawful and offenders may be prosecuted to the fullest extent of the law.

Unless otherwise stated the results shown in this test report refer only to the sample(s) tested and such sample(s) are retained only for 90 days (dry samples), 7 days (perishable samples) from the date of report.

Analytical Report

Reporter: 1635311 version 1
Sample Arrival Date: 20-Jul-2022 14:09
ReportDate Version: 22-Jul-2022 15:16
Packing: Plastic, ambient
Sampling Date: 15-Jun-2022
Sample size (kg): 0,079

ANNEX
Method Descriptions

Contaminations

Pesticides

Method Description
Flexscope.Determination of the pesticide content , GC-MS-MS method
Flexscope.Determination of the pesticide content, LC-MS-MS method

Pesticides LCMSMS (neg. ionisation)

Method Description
Determination of Phenoxy alkane carboxylic acids components are performed with the optimized method

Abbreviations:
acc: In accordance with
eq: Equivalent to

Method Code
Own method
Own method

Method Code
-



Analytical Report

Control Union Sri Lanka Laboratory
Attn: To Whom it may concerns
No. 100/8,03rd Floor, FPA Building,Nawala road
Narahenpita Colombo 00500
Sri Lanka

Reporter: 1635311 version 1
Sample Arrival Date: 20-Jul-2022 14:09
ReportDate Version: 22-Jul-2022 15:16
Packing: Plastic, ambient
Sampling Date: 15-Jun-2022
Sample size (kg): 0,079

Sample information *
Disponent Number: 858661
Sealed / Seal Code: Yes / CU021462, CU025915
Product specification: Soursop
Reference: CAP Organic (Pvt) Ltd
AWS / BarCode: V042 5476 417
Disp. Remark: PRD: 127483 (F01/01, 03)

* Information supplied by customer (TLR takes no responsibility for this information).

Contaminations

Pesticides

Parameter	Result (as received)	
Pesticides GC-MS-MS	Performed according annex, nothing detected	Q: R1
Pesticides LC-MS-MS	Performed according annex, nothing detected	Q: R1

Q: R1
Q: R1







Outlets



Good Market

"Lakpahana", 14 Reid Ave,
Colombo 00700



Park Street Gourmet

33B Park Street,
Colombo 00200



Govikama Farm Shop

41 Erawwala Rd,
Pannipitiya 10230



Sweet Surrender

321 Thalawathugoda Road,
Sri Jayawardenepura Kotte
10100



EOdel



Celeste Daily

38 Iswari Rd,
Colombo 00500



Nature pick

26/A Kaduwela Rd,
Malabe



Angani

321 Thalawathugoda Road,
Sri Jayawardenepura Kotte
10100



Green Reach

543/E/1
Madiwela Rd,
Colombo



**Kenko1st
Organic Foods**

27, 12 Rosmead Pl,
Colombo 00700



Pick & Pack

Colombo 06



**"HEAL" Aswanna
Organic Pte Ltd**

No 188, Stanley Thilakarathne
Mawatha, Nugegoda



Choc-A-Lot

Wattala



Almas

No. 45
Marine Drive, Colombo

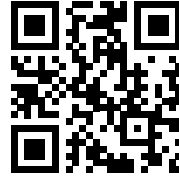


mahagedara.lk



Ceylon Pick

639A, Kotte Road 10100
Pita Kotte, Sri Lanka



www.cap.lk

CAP Organic (Pvt) Limited

(+94) 777 557 558

No 37/E/3, Ambasewana Road, Kalagedihena, Sri Lanka.

Factory | Office

19th Mile Post, Udawalawa Road, Thanamalvila, Sri Lanka

FOLLOW US



CAPCeylon